

infoRouter NT Authentication Implementation Guide



Active Innovations, Inc. A Document Management Company

Copyright 1998-2017
infoRouter NT Authentication Guide

www.inforouter.com

Implementing pure NT Authentication

This document is intended for cases where an NT domain is being used to authenticate users.

The infoRouter server must be a part of the NT domain. It should not be set up as a stand-alone server.

To switch an infoRouter instance to support NT authentication, perform the following:

1) IIS Settings

Open IIS Manager

Click and expand the "Sites" node

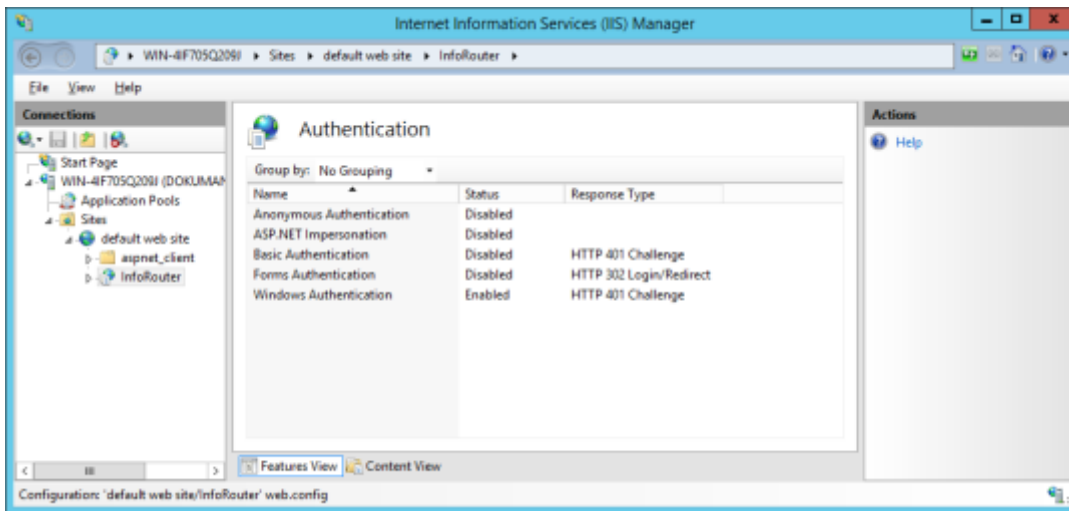
Click on the infoRouter application

Open the "Authentication" feature.

Make sure the settings are as follows:

Anonymous Authentication	Disabled
ASP.NET Impersonation	Disabled
Basic Authentication	Disabled
Forms Authentication	Disabled
Windows Authentication	Enabled

Only "windows authentication" must be **enabled**. Other authentication types must be **disabled**.



2) infoRouter Web.config settings

Using Windows file explorer navigate to the site directory under the infoRouter application directory:

Example: C:\inforouter\site or D:\inforouter\site

Edit the "web.config" file using Notepad or another text editor.
Add the authorization section as shown below:

```
<configuration>
...
  <system.web>
...
    <authorization>
      <allow users="*" />
    </authorization>
    <authentication mode="Windows" />
...
  </system.web>
...
</configuration>
```

Save the changes and close notepad.

3) Site directory security settings

Make sure the **site** directory has **read and execute rights** for **all the users** that need to access to the infoRouter application.

Use a group instead of individual users, such as

- Domain users

- Authenticated users

4) The SYSADMIN account

Using infoRouter in this mode requires that all users be authenticated from NT. This includes the infoRouter SYSADMIN account. You must either create an account called "SYSADMIN" as an NT Domain account or rename the infoRouter SYSADMIN account to another user name that matches an NT account name.

5) Other considerations

Running infoRouter in a pure NT Authentication mode has limitations.

Users from only a single domain can be authenticated. You cannot have users from different domains access the same instance of infoRouter.

In pure NT Authentication mode, you may not use "Mixed" Authentication. All users must be members of the same domain and infoRouter authentication is no longer possible.

You may set up a second instance of infoRouter and implement a different authentication method to support mixed authentication mode. This will be subject to additional licensing.

