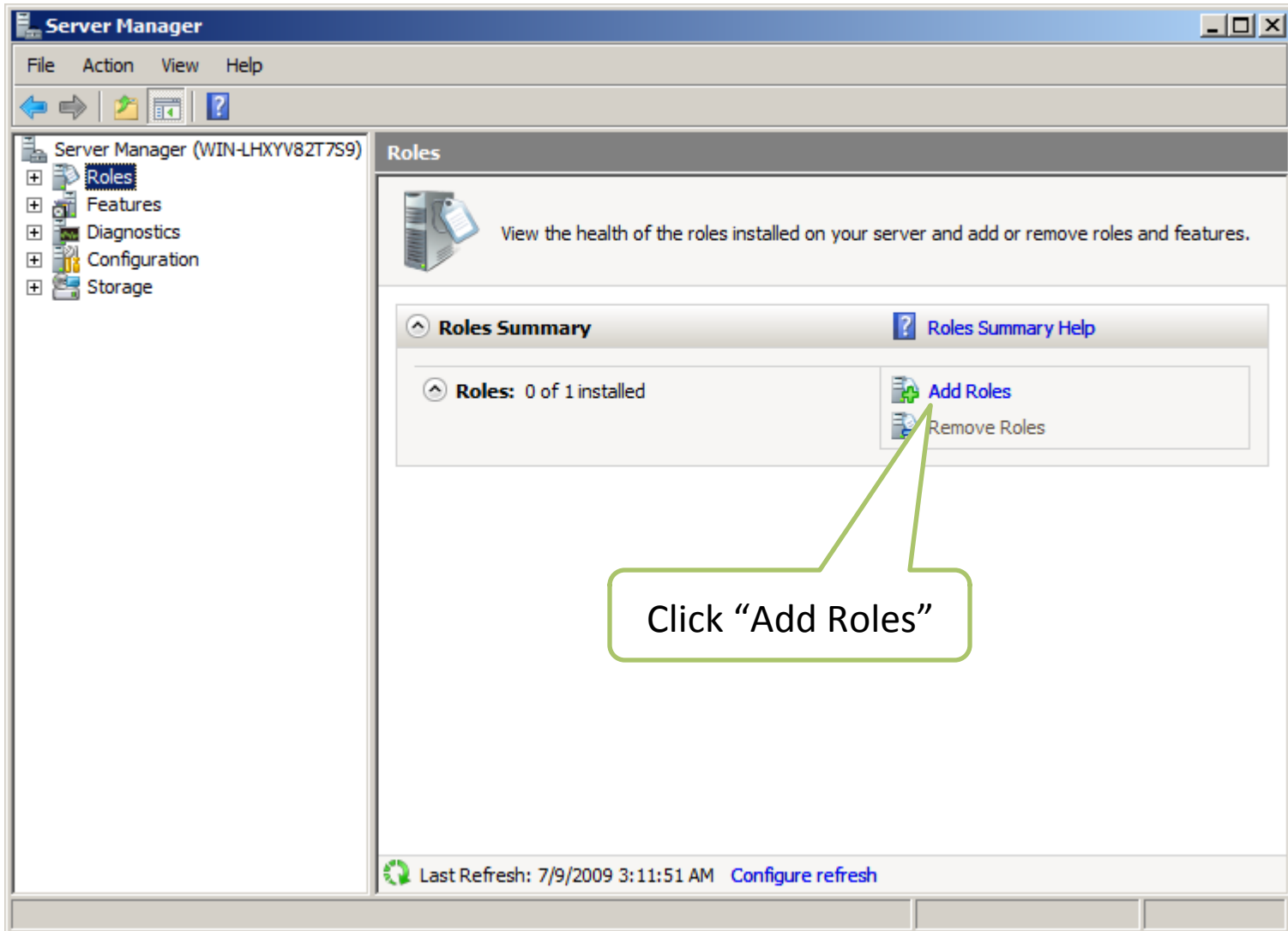




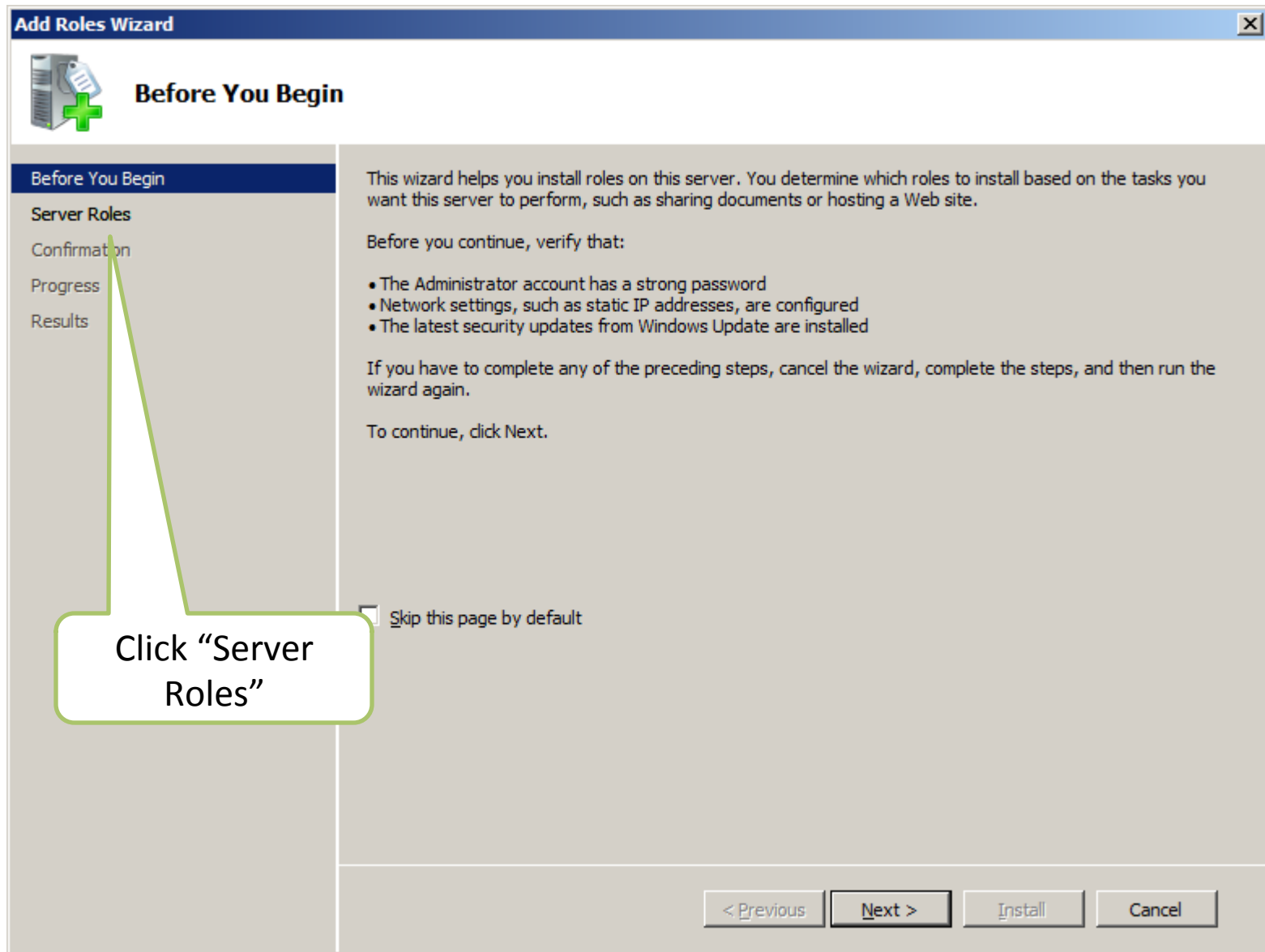
# **infoRouter Version 8**

## **Prerequisites for Installation on MS Windows 2008 Web Server Edition**

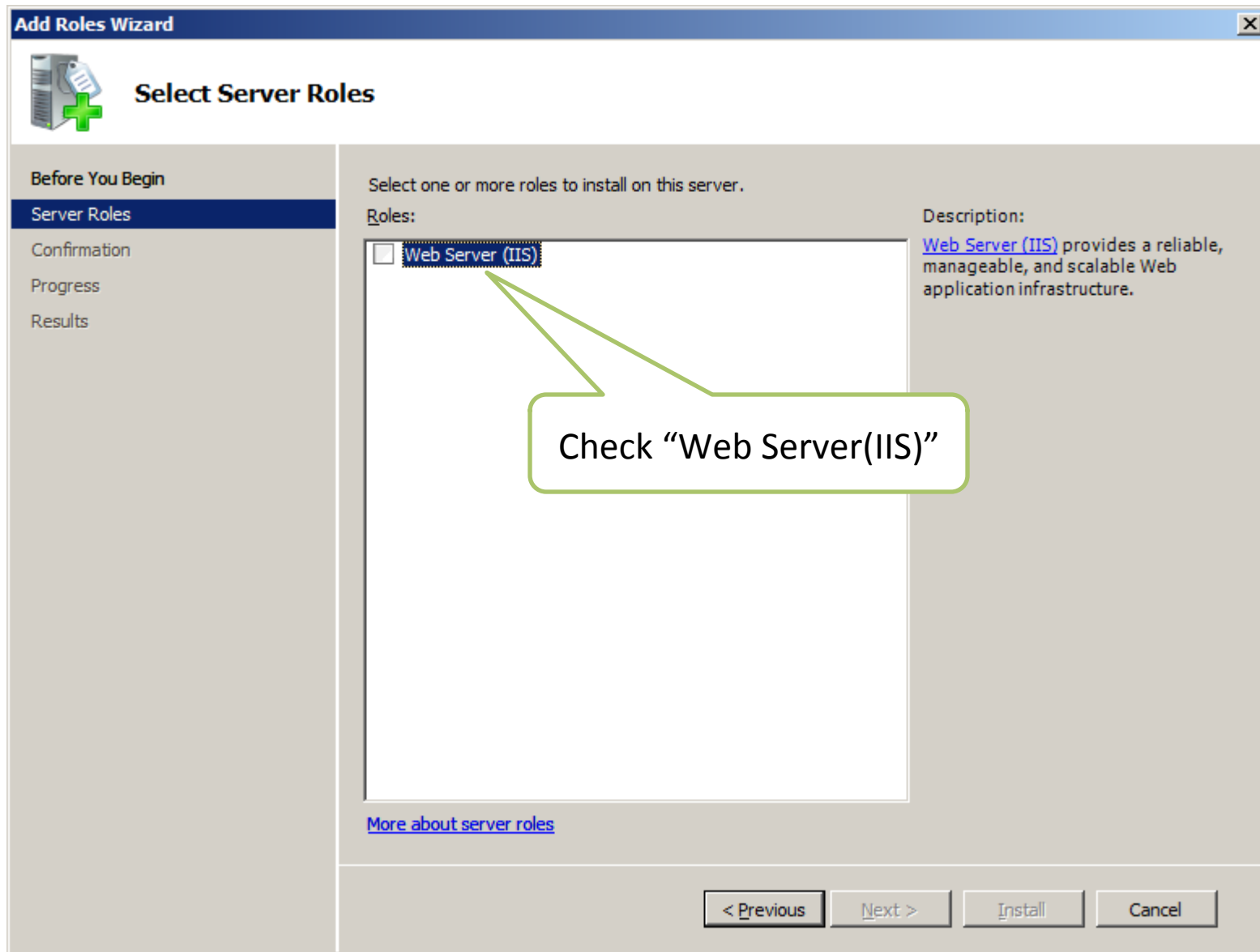
# Open the “Server Manager” window



## “Add Roles Wizards” opens



# Adding “Web Server” Roles



# Adding “Web Server” Roles

**Add Roles Wizard**

## Select Server Roles

Before You Begin

**Server Roles**

Confirmation

Progress

Results

Select one or more roles to install on this server.

Roles:

- Web Server (IIS)**

Description: [Web Server \(IIS\)](#) provides a reliable, manageable, and scalable Web application infrastructure.

**Add Roles Wizard**

### Add features required for Web Server (IIS)?

You cannot install Web Server (IIS) unless the required features are also installed.

Features:

- Windows Process Activation Service**
  - Process Model
  - Configuration APIs

Description: [Windows Process Activation Service](#) generalizes the IIS process model, removing the dependency on HTTP. All the features of IIS that were previously available only to HTTP applications are now available to applications hosting Windows Communication Foundation (WCF) services, using non-HTTP protocols. IIS 7.0 also uses Windows Process Activation Service for message-based activation over HTTP.

< Previous   Next >   Install   Cancel

When the “Web Server (IIS)” option is checked, this dialog might appear. Please click on the “Add Required Features” button.

# Adding “Web Server” Roles

**Add Roles Wizard**

**Select Server Roles**

Before You Begin

**Server Roles**

Web Server (IIS)

Role Services

Confirmation

Progress

Results

Select one or more roles to install on this server.

Roles:

- Web Server (IIS)

Description:

[Web Server \(IIS\)](#) provides a reliable, manageable, and scalable Web application infrastructure.

[More about server roles](#)

< Previous   **Next >**   Install   Cancel

Click “Next”

# Adding “Web Server” Roles

**Add Roles Wizard**

**Web Server (IIS)**

**Before You Begin**

- Server Roles
- Web Server (IIS)**
- Role Services
- Confirmation
- Progress
- Results

**Introduction to Web Server (IIS)**

Web servers are computers that have specific software that allows them to accept requests from client computers and return responses to those requests. Web servers let you share information over the Internet, or through intranets and extranets. The Web Server role includes Internet Information Services (IIS) 7.0, a unified Web platform that integrates IIS 7.0, ASP.NET, and Windows Communication Foundation. IIS 7.0 also features enhanced security, simplified diagnostics, and delegated administration.

**Things to Note**

- Using Windows System Resource Manager (WSRM) can help ensure equitable servicing of Web server traffic especially when there are multiple roles on this computer.
- The default installation for the Web Server (IIS) role includes the installation of role services that enable you to serve static content, make minor customizations (such as default documents and HTTP errors), monitor and log server activity, and configure static content compression.

**Additional Information**

- [Overview of Web Server \(IIS\)](#)
- [Overview of Available Role Services in IIS 7.0](#)
- [IIS Checklists](#)
- [Common Administrative Tasks in IIS](#)
- [Overview of WSRM](#)

Click “Next”

< Previous   **Next >**   Install   Cancel

# Adding “Web Server” Roles

**Add Roles Wizard**

**Select Role Services**

Before You Begin  
Server Roles  
Web Server (IIS)  
**Role Services**  
Confirmation  
Progress  
Results

Select the role services to install for Web Server (IIS):

Role services:

- Web Server
  - Common HTTP Features
    - Static Content
    - Default Document
    - Directory Browsing
    - HTTP Errors
    - HTTP Redirection
  - Application Development
    - ASP.NET**
    - .NET Extensibility
    - ASP
    - CGI
    - ISAPI Extensions
    - ISAPI Filters
    - Server Side Includes
  - Health and Diagnostics
    - HTTP Logging
    - Logging Tools
    - Request Monitor
    - Tracing
    - Custom Logging
    - ODBC Logging

Description:  
[ASP.NET](#) provides a server side object oriented programming environment for building Web sites and Web applications using managed code. ASP.NET is not simply a new version of ASP. Having been entirely re-architected to provide a highly productive programming experience based on the .NET Framework, ASP.NET provides a robust infrastructure for building web applications.

[More about role services](#)

< Previous    Next >    Install    Cancel

Check “ASP.NET”.  
Click on “Add  
Required Roles  
Services” if  
prompted.



# Adding “Web Server” Roles

**Add Roles Wizard**

**Select Role Services**

Before You Begin  
Server Roles  
Web Server (IIS)  
**Role Services**  
Confirmation  
Progress  
Results

Select the role services to install for Web Server (IIS):

Role services:

- ODBC Logging
- Security
  - Basic Authentication
  - Windows Authentication
  - Digest Authentication
  - Client Certificate Mapping Authentication
  - IIS Client Certificate Mapping Authentication
  - URL Authorization
  - Request Filtering
  - IP and Domain Restrictions
- Performance
  - Static Content Compression
  - Dynamic Content Compression
- Management Tools
  - IIS Management Console
  - IIS Management Scripts and Tools**
  - Management Service
- IIS 6 Management Compatibility
  - IIS 6 Metabase Compatibility
  - IIS 6 WMI Compatibility
  - IIS 6 Scripting Tools
  - IIS 6 Management Console

Description:  
[IIS Management Scripts and Tools](#) provide infrastructure to programmatically manage an IIS 7 Web server by using commands in a command window or by running scripts. You can use these tools when you want to automate commands in batch files or when you do not want to incur the overhead of managing IIS by using the user interface.

[More about role services](#)

< Previous   **Next >**   Install   Cancel

Check the “Basic Authentication” option

Check the “IIS Management Scripts and Tools” option

Click “Next”

# Adding “Web Server” Roles

**Add Roles Wizard**

**Confirm Installation Selections**

Before You Begin  
Server Roles  
Web Server (IIS)  
Role Services  
**Confirmation**  
Progress  
Results

To install the following roles, role services, or features, click Install.

2 informational messages below

- This server might need to be restarted after the installation completes.

**Web Server (IIS)**

- Find out more about Windows System Resource Manager (WSRM) and how it can help optimize CPU usage

**Web Server**

- Common HTTP Features
  - Static Content
  - Default Document
  - Directory Browsing
  - HTTP Errors
- Application Development
  - ASP.NET
  - .NET Extensibility
  - ISAPI Extensions
  - ISAPI Filters
- Health and Diagnostics
  - HTTP Logging
  - Request Monitor
- Security
  - Basic Authentication

[Print, e-mail, or save this information](#)

< Previous   Next >   **Install**   Cancel

Click on the “Install” Button

# Adding “Web Server” Roles

**Add Roles Wizard**

**Installation Progress**

Before You Begin  
Server Roles  
Web Server (IIS)  
    Role Services  
Confirmation  
**Progress**  
Results

The following roles, role services, or features are being installed:

- Web Server (IIS)**
- Windows Process Activation Service**

Initializing installation...

< Previous    Next >    Install    Cancel

Please wait while the system installs the selected roles

# Adding “Web Server” Roles

**Add Roles Wizard**

**Installation Results**

Before You Begin  
Server Roles  
Web Server (IIS)  
    Role Services  
Confirmation  
Progress  
**Results**

The following roles, role services, or features were installed successfully:

⚠ 1 warning message below

⚠ Windows automatic updating is not enabled. To install the latest updates, use Windows Update in Control Panel to check for updates.

⬆ **Web Server (IIS)** **✔ Installation succeeded**

The following role services were installed:

**Web Server**

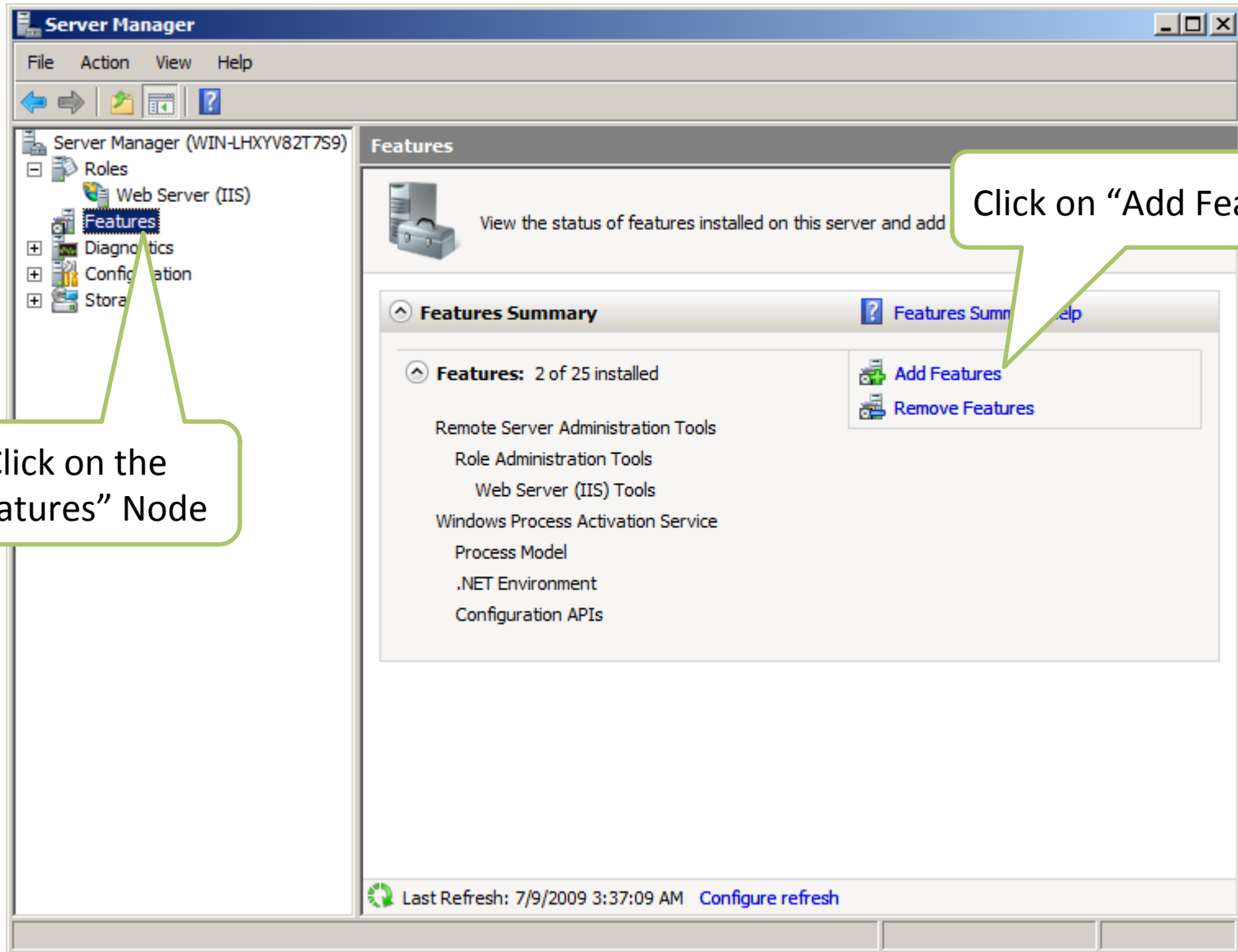
- Common HTTP Features
  - Static Content
  - Default Document
  - Directory Browsing
  - HTTP Errors
- Application Development
  - ASP.NET
  - .NET Extensibility
  - ISAPI Extensions
  - ISAPI Filters
- Health and Diagnostics
  - HTTP Logging
  - Request Monitor
- Security

[Print, e-mail, or save the installation report](#)

< Previous    Next >    **Close**    Cancel

Click the “Close” button

To add another required feature, please go back to the “Server Manager”.



Click on the  
“Features” Node

Click on “Add Features”

# Adding “Index Server” and “SMTP” Features.

The “Add Features” wizards opens

**Add Features Wizard**

## Select Features

Select one or more features to install on this server.

Features:	Description:
<input type="checkbox"/> .NET Framework 3.0 Features	
<input type="checkbox"/> BitLocker Drive Encryption	
<input type="checkbox"/> BITS Server Extensions	
<input type="checkbox"/> Desktop Experience	
<input type="checkbox"/> File Server Resource Manager	
<input type="checkbox"/> Group Policy Management	
<input checked="" type="checkbox"/> Indexing Service	
<input type="checkbox"/> Internet Printing Client	
<input type="checkbox"/> LPR Port Monitor	
<input type="checkbox"/> Message Queuing	
<input type="checkbox"/> Network Load Balancing	
<input type="checkbox"/> Remote Assistance	
<input checked="" type="checkbox"/> Remote Server Administration Tools	
<input type="checkbox"/> Simple TCP/IP Services	
<input checked="" type="checkbox"/> SMTP Server	<a href="#">SMTP Server</a> supports the transfer of e-mail messages between e-mail systems.
<input type="checkbox"/> SNMP Services	
<input type="checkbox"/> Telnet Client	
<input type="checkbox"/> Telnet Server	
<input type="checkbox"/> TFTP Client	
<input type="checkbox"/> Windows Internal Database	
<input type="checkbox"/> Windows PowerShell	
<input type="checkbox"/> Windows Process Activation Service (Installed)	

[More about features](#)

< Previous   Next >   Install   Cancel

Check “Indexing Service”

if you don't have an SMTP server on your network please check “SMTP Server” to send emails using the local machine SMTP server.

# Adding “Index Server” and “SMTP” Features.

The screenshot shows the Windows Add Features Wizard. The main window is titled "Add Features Wizard" and displays the "Add role services and features required for SMTP Server?" dialog. The dialog contains a list of role services and a description of the Web Server (IIS) feature. A callout box points to the "Add Required Role Services" button.

**Add Features Wizard**

**Select Features**

- Features
- Web Server (IIS)
- Role Services
- Confirmation
- Progress
- Results

**Add Features Wizard**

**Add role services and features required for SMTP Server?**

You cannot install SMTP Server unless the required role services and features are also installed.

**Role Services:**

- Web Server (IIS)**
  - Management Tools
    - IIS 6 Management Compatibility
      - IIS 6 Management Console
      - IIS 6 Metabase Compatibility
  - Remote Server Administration Tools
    - Feature Administration Tools
    - SMTP Server Tools

**Description:**

[Web Server \(IIS\)](#) provides a reliable, manageable, and scalable Web application infrastructure.

**Buttons:** Add Required Role Services, Cancel

**Why are these role services and features required?**

- Remote Assistance
- Remote Server Administration Tools (Installed)
- Simple TCP/IP Services
- SMTP Server**
- SNMP Services
- Telnet Client
- Telnet Server
- TFTP Client
- Windows Internal Database
- Windows PowerShell
- Windows Process Activation Service (Installed)

[More about features](#)

**Navigation Buttons:** < Previous, Next >, Install, Cancel

# Adding “Index Server” and “SMTP” Features.

**Add Features Wizard**

**Web Server (IIS)**

**Features**

- Web Server (IIS)
- Role Services
- Confirmation
- Progress
- Results

**Introduction to Web Server (IIS)**

Web servers are computers that have specific software that allows them to accept requests from client computers and return responses to those requests. Web servers let you share information over the Internet, or through intranets and extranets. The Web Server role includes Internet Information Services (IIS) 7.0, a unified Web platform that integrates IIS 7.0, ASP.NET, and Windows Communication Foundation. IIS 7.0 also features enhanced security, simplified diagnostics, and delegated administration.

**Things to Note**

- Using Windows System Resource Manager (WSRM) can help ensure equitable servicing of Web server traffic especially when there are multiple roles on this computer.
- The default installation for the Web Server (IIS) role includes the installation of role services that enable you to serve static content, make minor customizations (such as default documents and HTTP errors), monitor and log server activity, and configure static content compression.

**Additional Information**

- [Overview of Web Server \(IIS\)](#)
- [Overview of Available Role Services in IIS 7.0](#)
- [IIS Checklists](#)
- [Common Administrative Tasks in IIS](#)
- [Overview of WSRM](#)

Click “Next”

< Previous   **Next >**   Install   Cancel



# Adding “Index Server” and “SMTP” Features.

**Add Features Wizard**

## Select Role Services

Features

- Web Server (IIS)
- Role Services**
- Confirmation
- Progress
- Results

Select the role services to install for Web Server (IIS):

Role services:

- Web Server (Installed)
  - Common HTTP Features (Installed)
    - Static Content (Installed)
    - Default Document (Installed)
    - Directory Browsing (Installed)
    - HTTP Errors (Installed)
    - HTTP Redirection
  - Application Development (Installed)
    - ASP.NET (Installed)
    - .NET Extensibility (Installed)
    - ASP
    - CGI
    - ISAPI Extensions (Installed)
    - ISAPI Filters (Installed)
    - Server Side Includes
  - Health and Diagnostics (Installed)
    - HTTP Logging (Installed)
    - Logging Tools
    - Request Monitor (Installed)
    - Tracing
    - Custom Logging
    - ODBC Logging

Description:

[Web Server](#) provides support for HTML Web sites and optional support for ASP.NET, ASP, and Web server extensions. You can use the Web Server to host an internal or external Web site or to provide an environment for developers to create Web-based applications.

[More about role services](#)

< Previous   **Next >**   Install   Cancel

Click “Next”

# Adding “Index Server” and “SMTP” Features.

**Add Features Wizard**

## Confirm Installation Selections

Features

- Web Server (IIS)
  - Role Services

Confirmation

Progress

Results

To install the following roles, role services, or features, click Install.

2 informational messages below

- This server might need to be restarted after the installation completes.

- Web Server (IIS)**
  - Find out more about [Windows System Resource Manager \(WSRM\)](#) and how it can help optimize CPU usage
  - Management Tools**
    - IIS 6 Management Compatibility
    - IIS 6 Metabase Compatibility
    - IIS 6 Management Console
  - Indexing Service**
- Remote Server Administration Tools**
  - Feature Administration Tools**
    - SMTP Server Tools
  - SMTP Server**

[Print, e-mail, or save this information](#)

< Previous   Next >   **Install**   Cancel

Click “Install”

# Adding “Index Server” and “SMTP” Features.

**Add Features Wizard**

## Installation Progress

The following roles, role services, or features are being installed:

- Web Server (IIS)**
- Indexing Service**
- Remote Server Administration Tools**
- SMTP Server**

Progress: Initializing installation...

< Previous   Next >   Install   Cancel

Please wait while the required features are installed.

# Adding “Index Server” and “SMTP” Feature.

The screenshot shows the 'Add Features Wizard' window with the 'Installation Results' tab selected. The left sidebar contains the following navigation options: Features, Web Server (IIS), Role Services, Confirmation, Progress, and Results (highlighted). The main content area displays the following information:

The following roles, role services, or features were installed successfully:

⚠ 1 warning message below

⚠ Windows automatic updating is not enabled. To install the latest updates, use Windows Update in Control Panel to check for updates.

⊕ **Web Server (IIS)** ✔ Installation succeeded

The following role services were installed:

**Management Tools**

- IIS 6 Management Compatibility
- IIS 6 Metabase Compatibility
- IIS 6 Management Console

**Indexing Service** ✔ Installation succeeded

⊕ **Remote Server Administration Tools** ✔ Installation succeeded

The following features were installed:

**Feature Administration Tools**

- SMTP Server Tools

**SMTP Server** ✔ Installation succeeded

[Installation report](#)

At the bottom of the window, there are four buttons: '< Previous', 'Next >', 'Close', and 'Cancel'. A callout box with a green border points to the 'Close' button, containing the text: 'Click the “Close” button.'

Your server is now ready for the installation of infoRouter.  
Please make sure that you meet the requirements outlined  
in the System Requirements document.



## **infoRouter Version 8 Prerequisites for Installation on MS Windows 2008 Web Server Edition**

Did you know about the infoRouter Forum site?  
24/7 Access to information about infoRouter

<http://forum.inforouter.com>