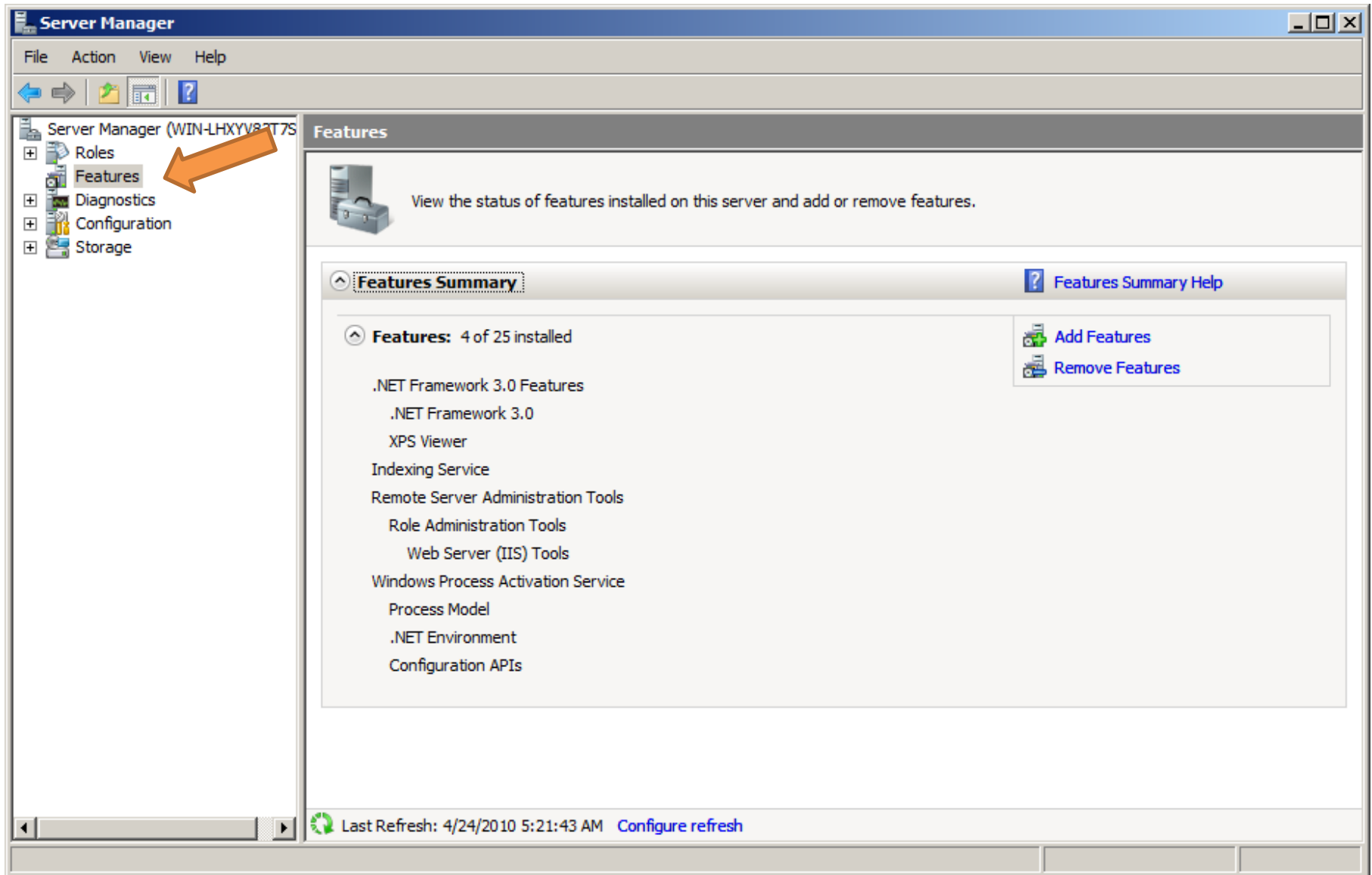


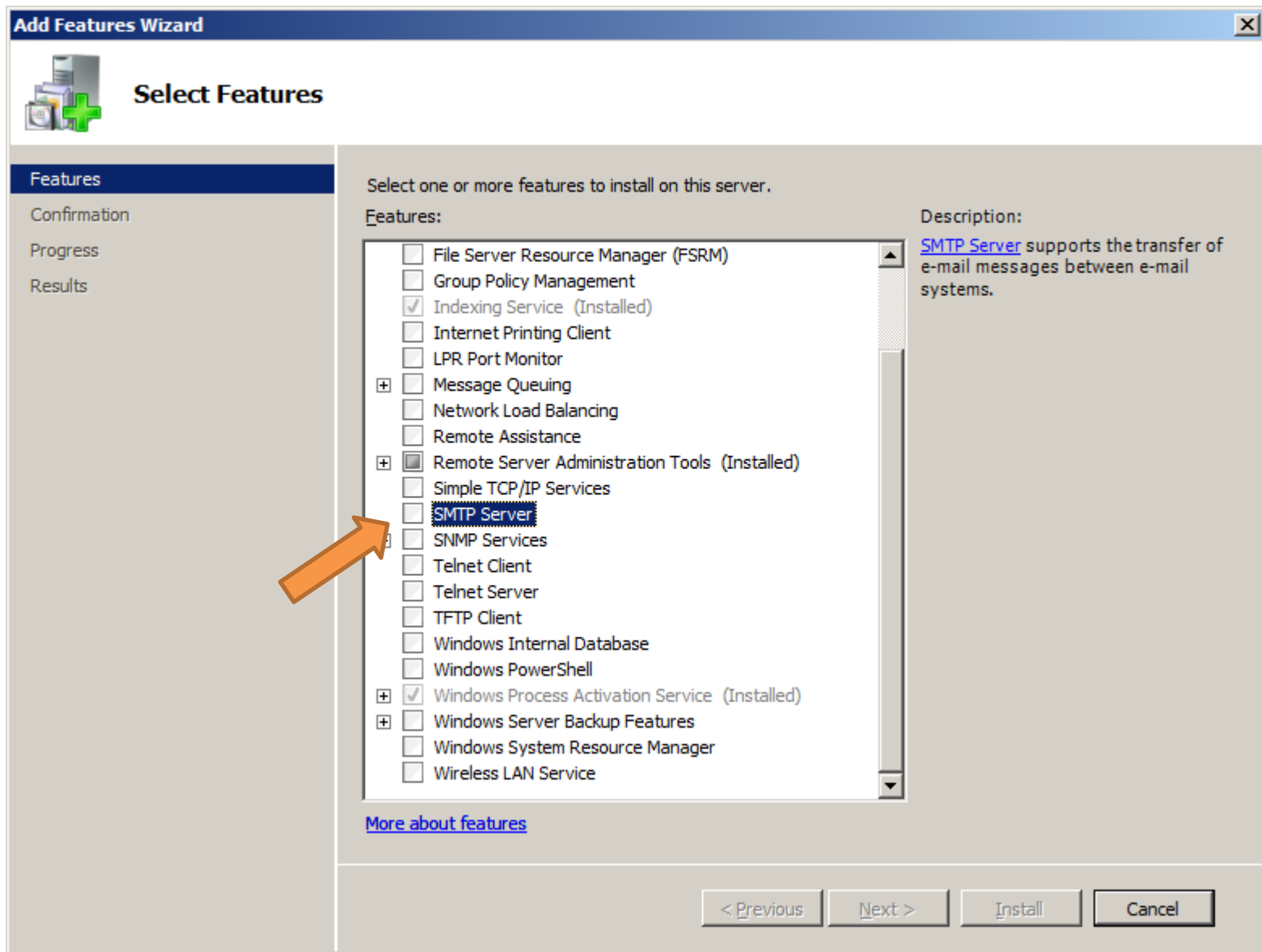


Configuring your Windows 2008 SMTP Server to work with infoRouter

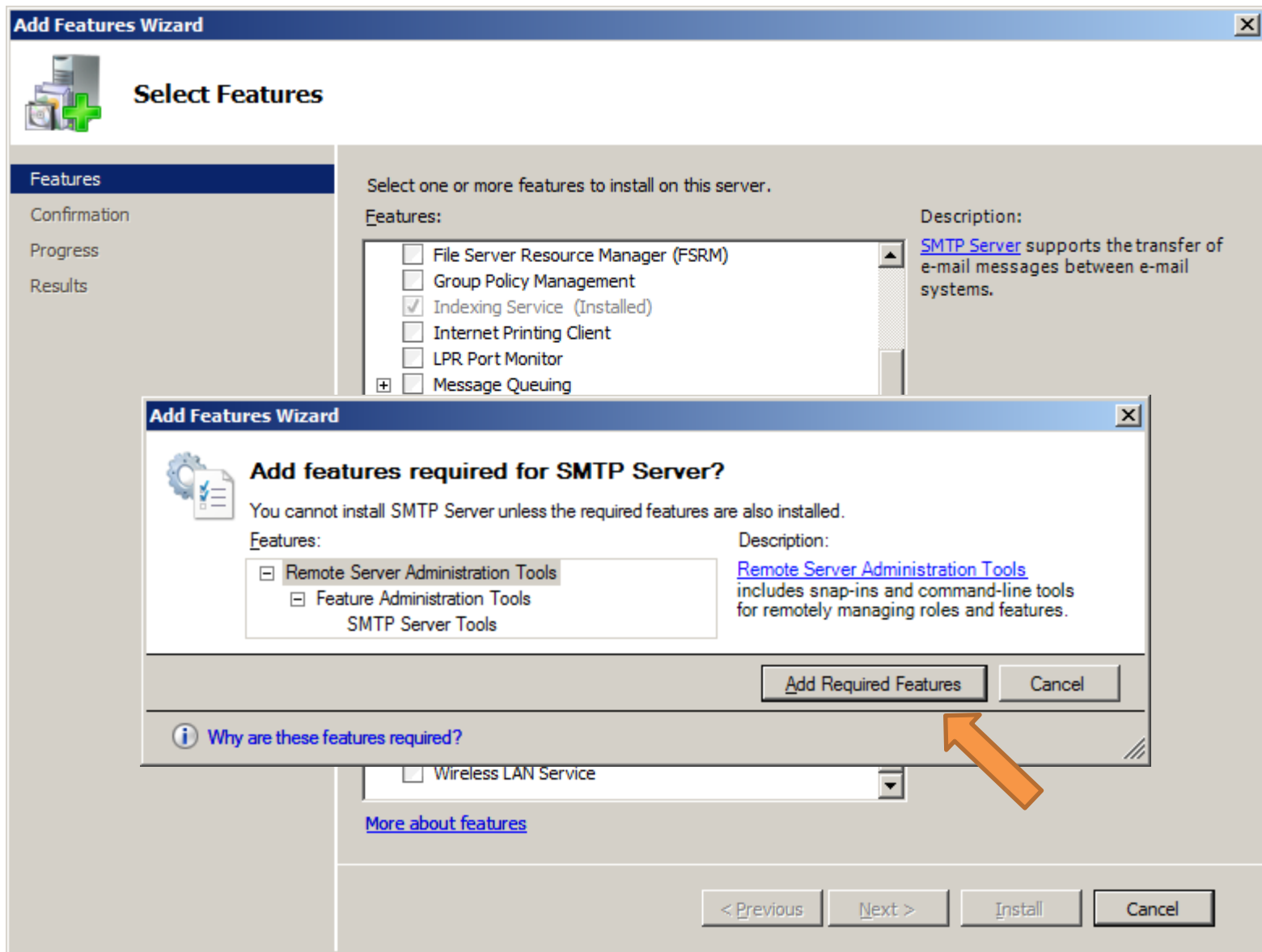
Using the local SMTP server to send email
messages from infoRouter



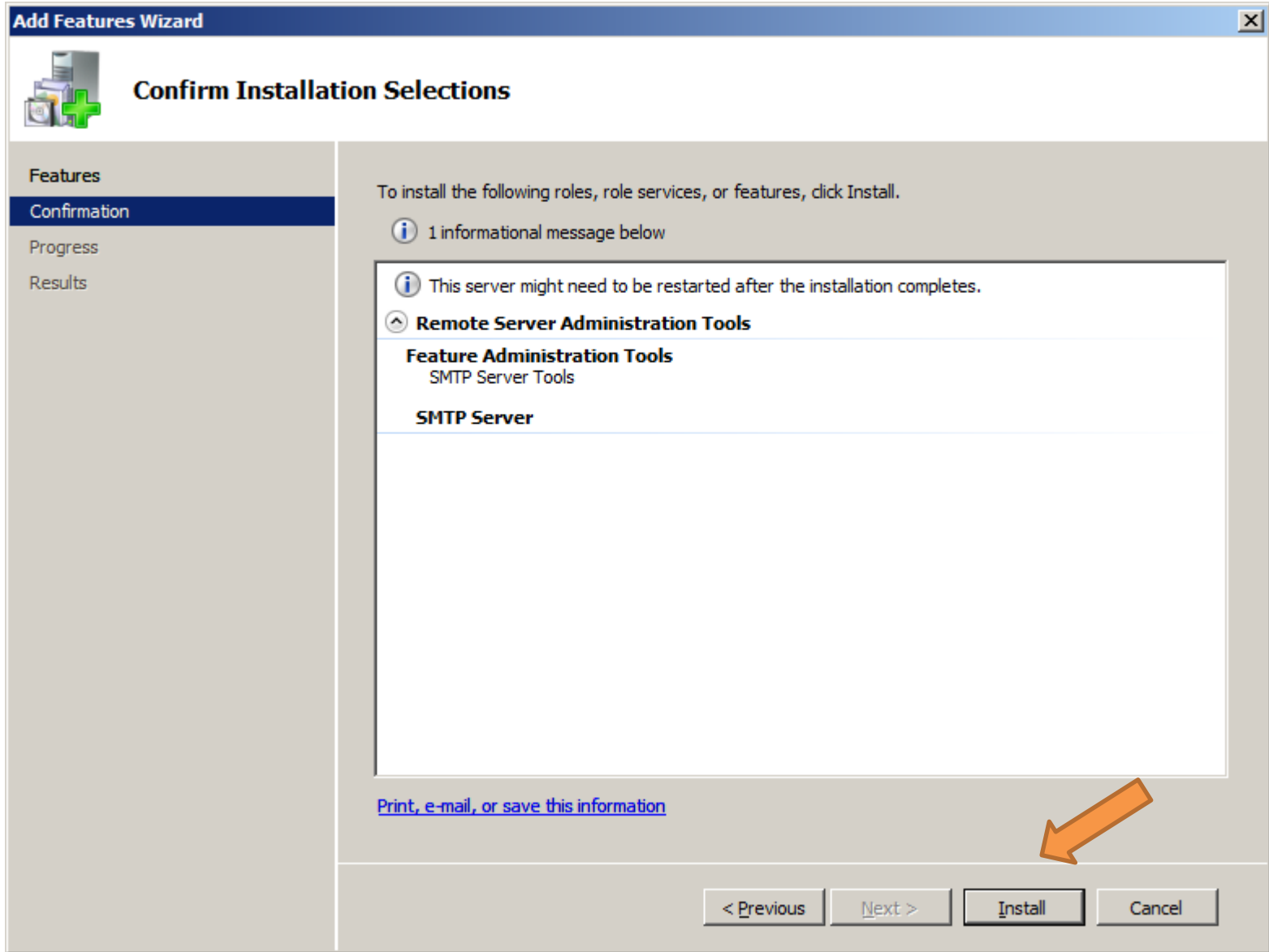
Open the Server Manager Console and select Features to Add Features



Make sure to check the SMTP Server option



Click Add Required Features, and click on the Next button



Click on Install



Installation Results

Features

Confirmation

Progress

Results

The following roles, role services, or features were installed successfully:

Remote Server Administration Tools	Installation succeeded
The following features were installed:	
Feature Administration Tools	
SMTP Server Tools	
SMTP Server	Installation succeeded

[Print, e-mail, or save the installation report](#)

< Previous

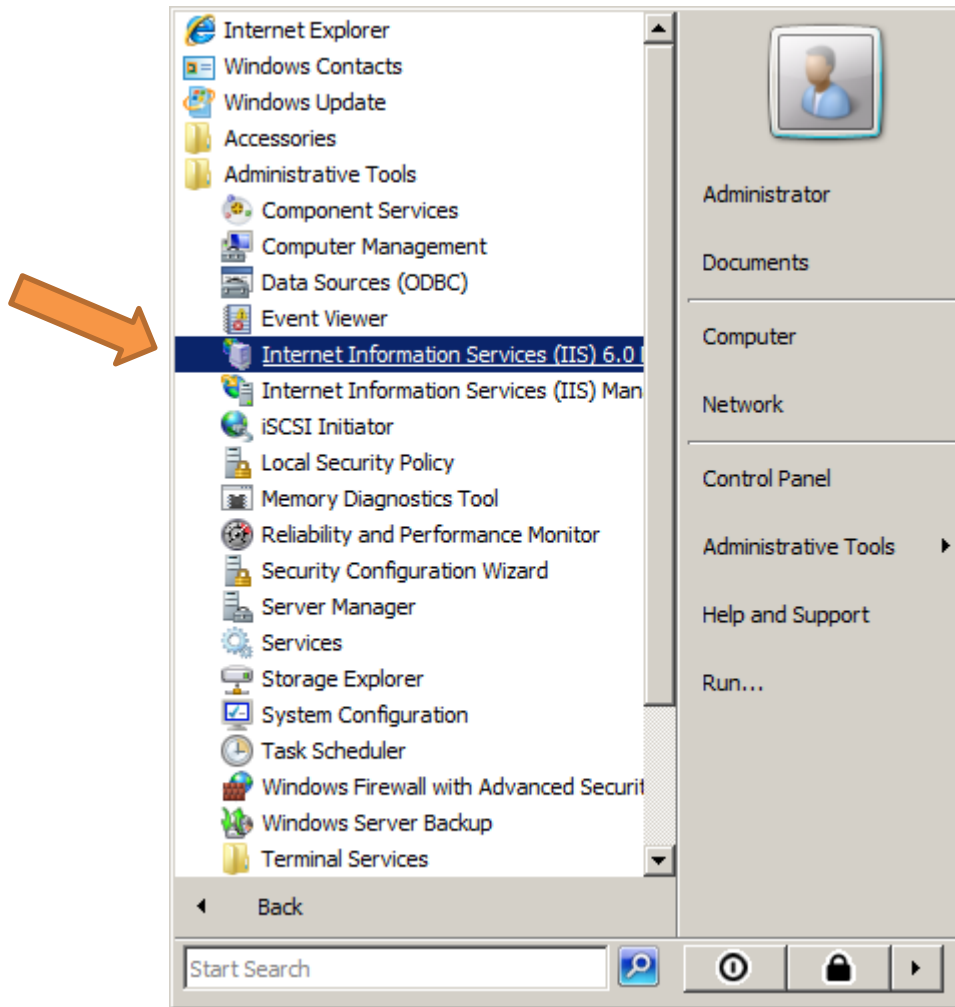
Next >

Close

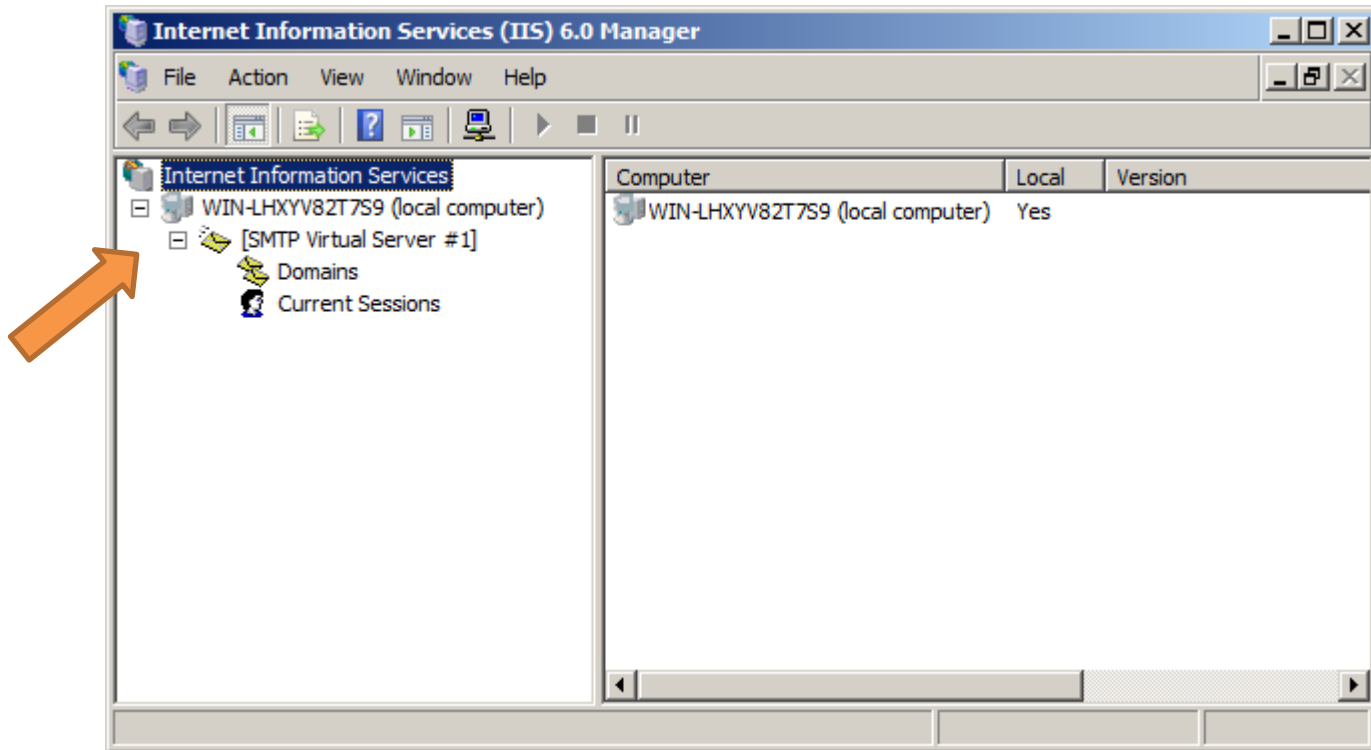
Cancel



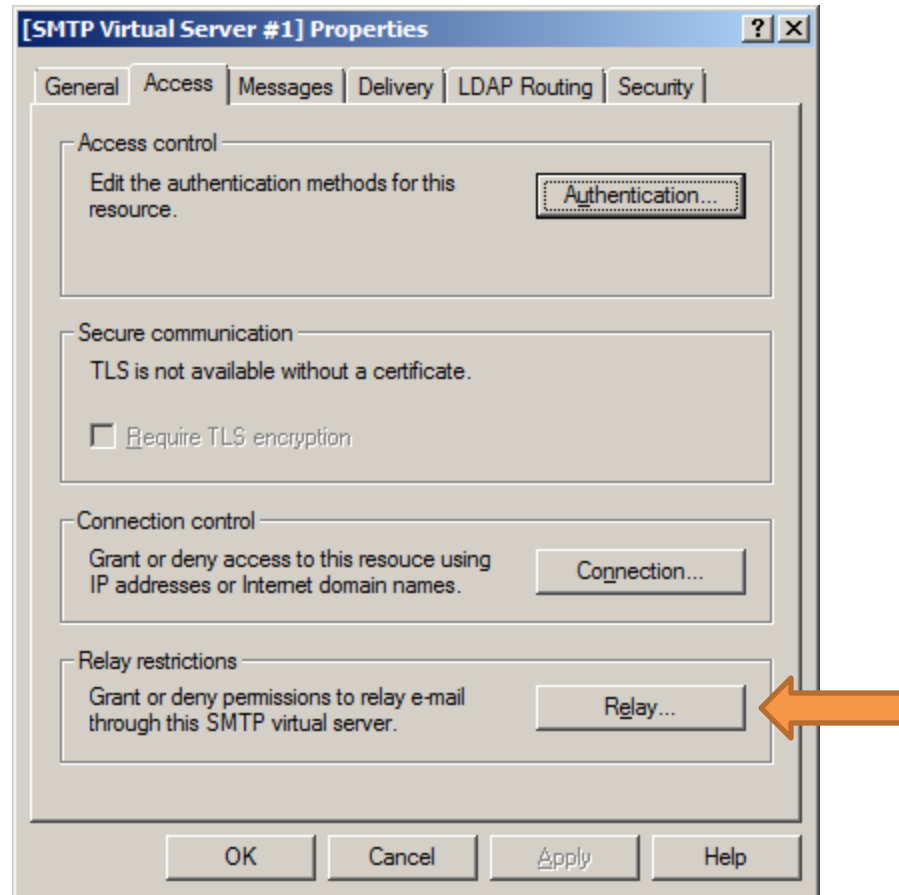
Click on Close



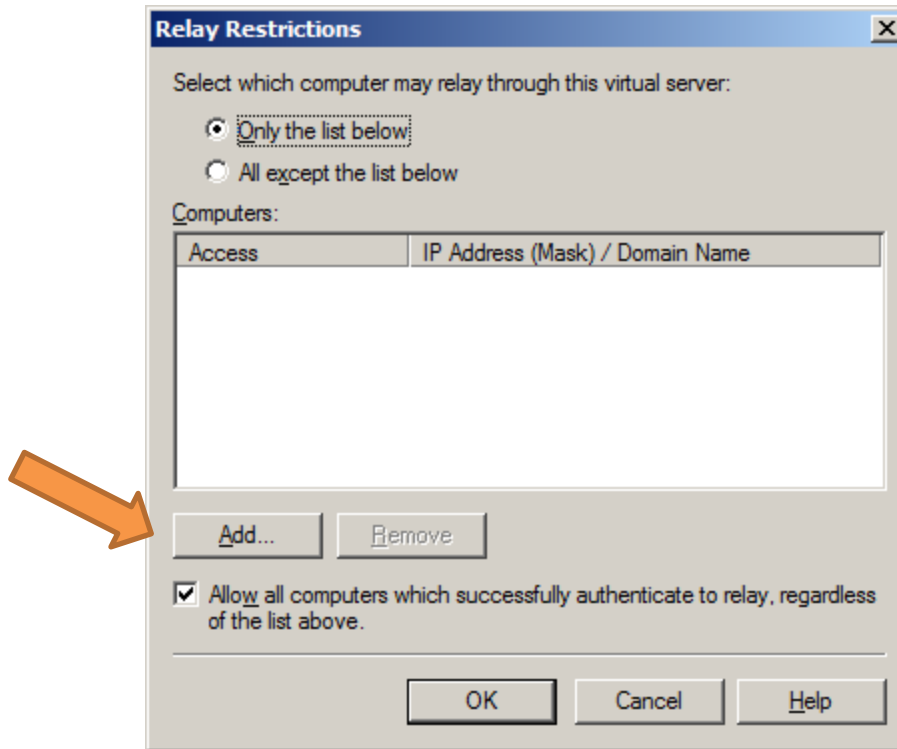
Open IIS 6.0 Manager under Administrative Tools -> Internet Information Services 6.0



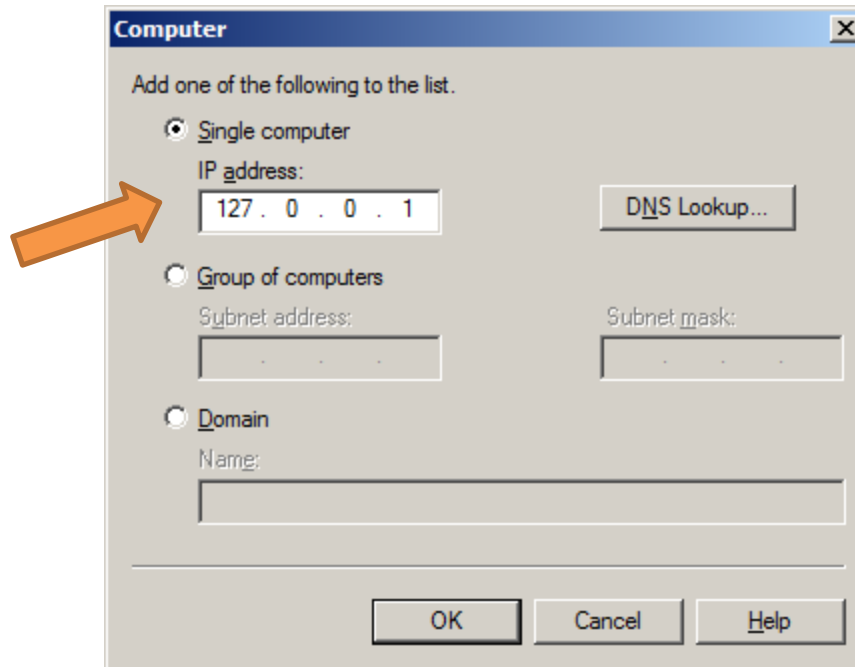
Right click on “SMTP Virtual Server” and chose properties



Click on the "Relay" Button

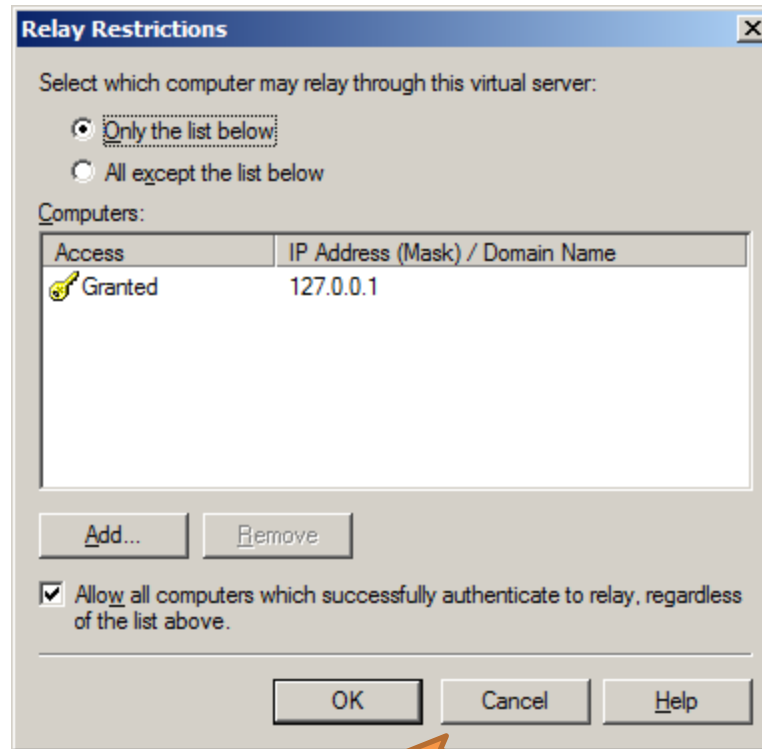


Click on the "Add" Button

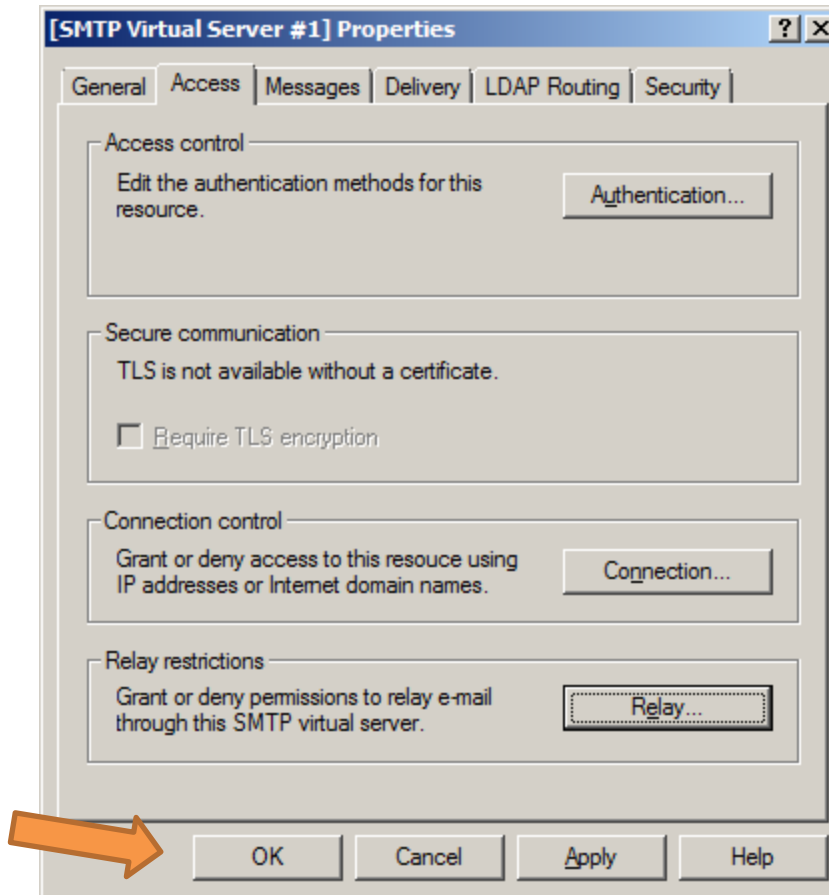


Choose the “Single computer” option

Enter 127.0.0.1 address (localhost) and click on the “OK” button



Click on the "OK" button



Click on the "OK" button to complete the wizard