



**infoRouter MS Office Add-in Setup  
Installation using Group Policies  
InfoRouter Version 7.5  
Active Innovations, Inc. - Copyright 1998 - 2008  
<http://www.inforouter.com>**

# infoRouter MS Office Add-in Setup

## Installation using Group Policies

---

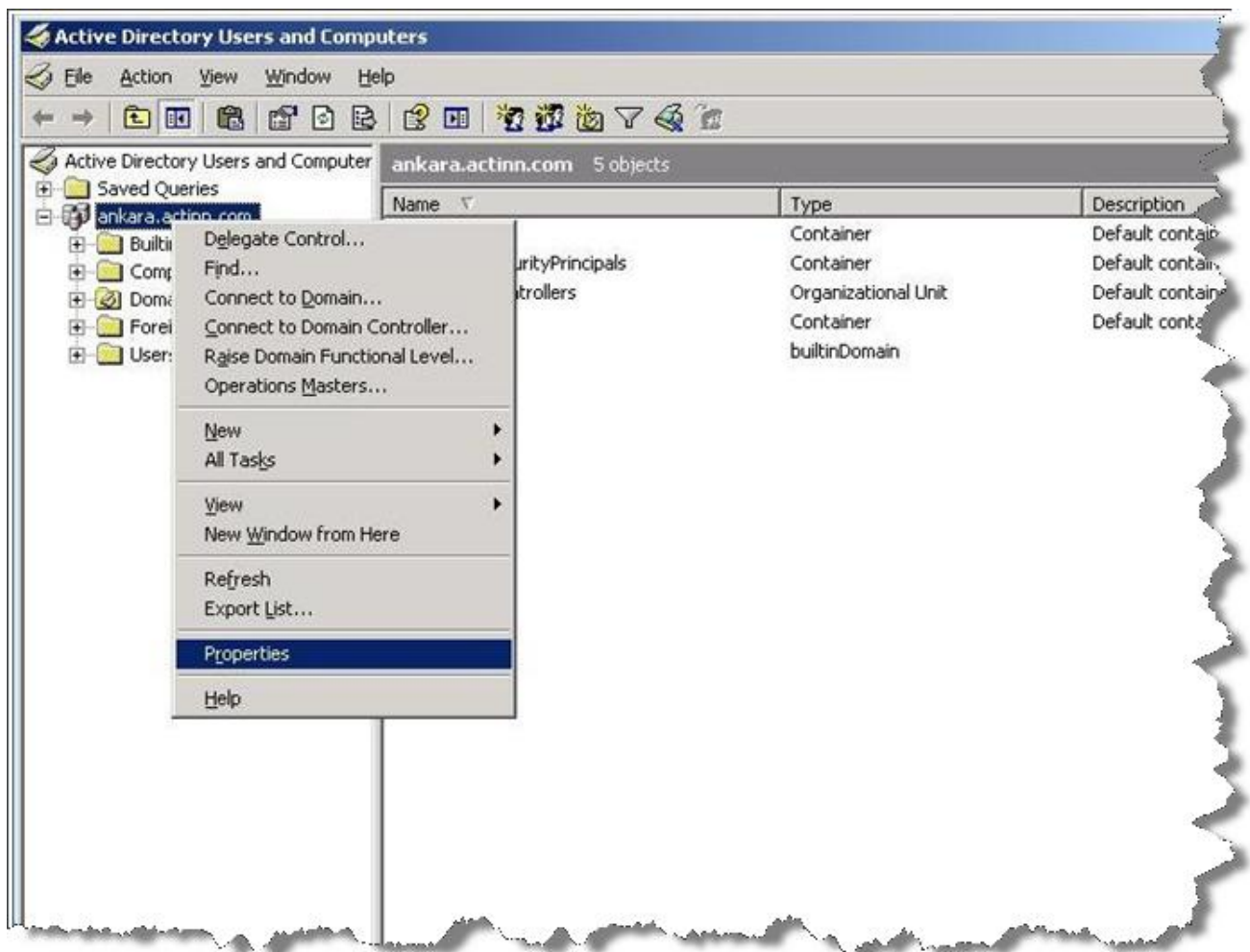
### Prerequisites

Please create a shared folder on your network with “Read” access assigned to all users. Copy the infoRouter office “Setup.msi” file to this share location.

The “Setup.msi” file can be found in the following path:  
<infoRouterApplicationPath>/add-ins/office/setup.msi

### Creating the infoRouter Group Policy package

On Windows 2003 server, navigate to the Control panel / Administrative Tools  
Expand the “Active Directory Users and Computers” node  
Right click on domain name and select the properties menu.

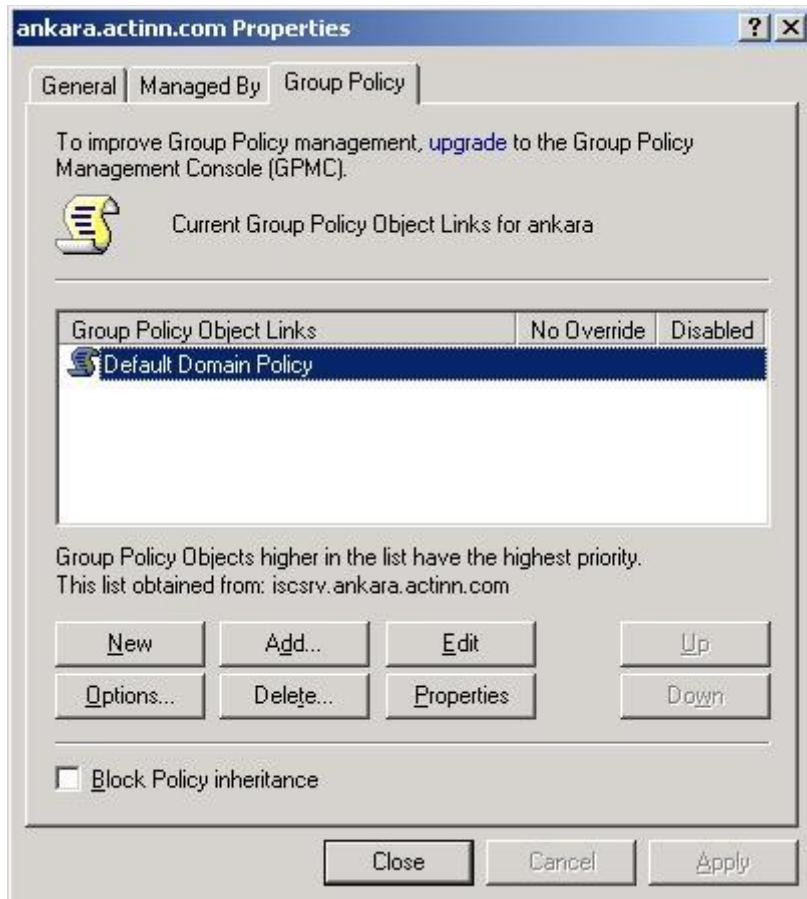


# infoRouter MS Office Add-in Setup

## Installation using Group Policies

---

In the properties window that appears, switch the “Group Policy” tab.

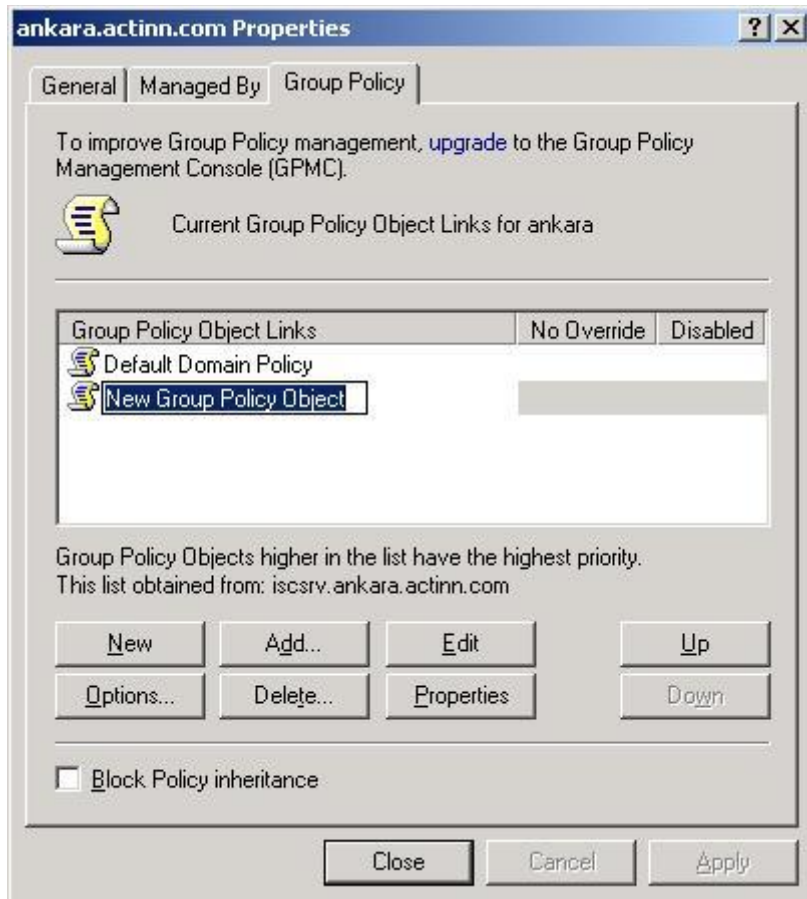


# infoRouter MS Office Add-in Setup

## Installation using Group Policies

---

Click the “New” button to add a new group policy.

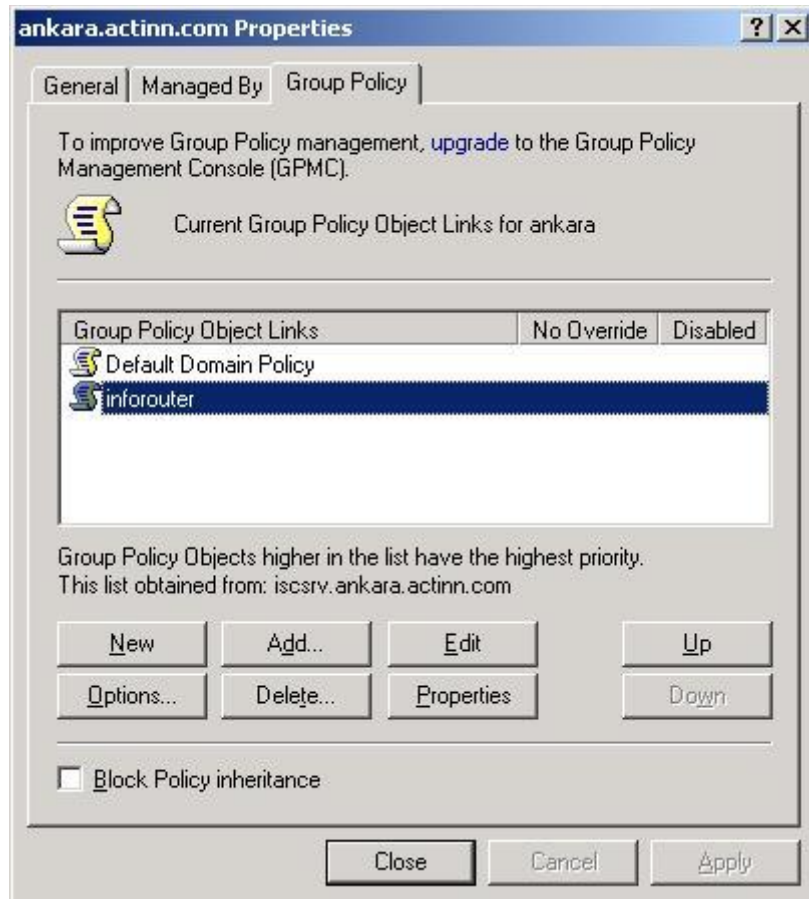


# infoRouter MS Office Add-in Setup

## Installation using Group Policies

---

Rename the policy as “infoRouter”. Then click the “Edit” button.



# infoRouter MS Office Add-in Setup

## Installation using Group Policies

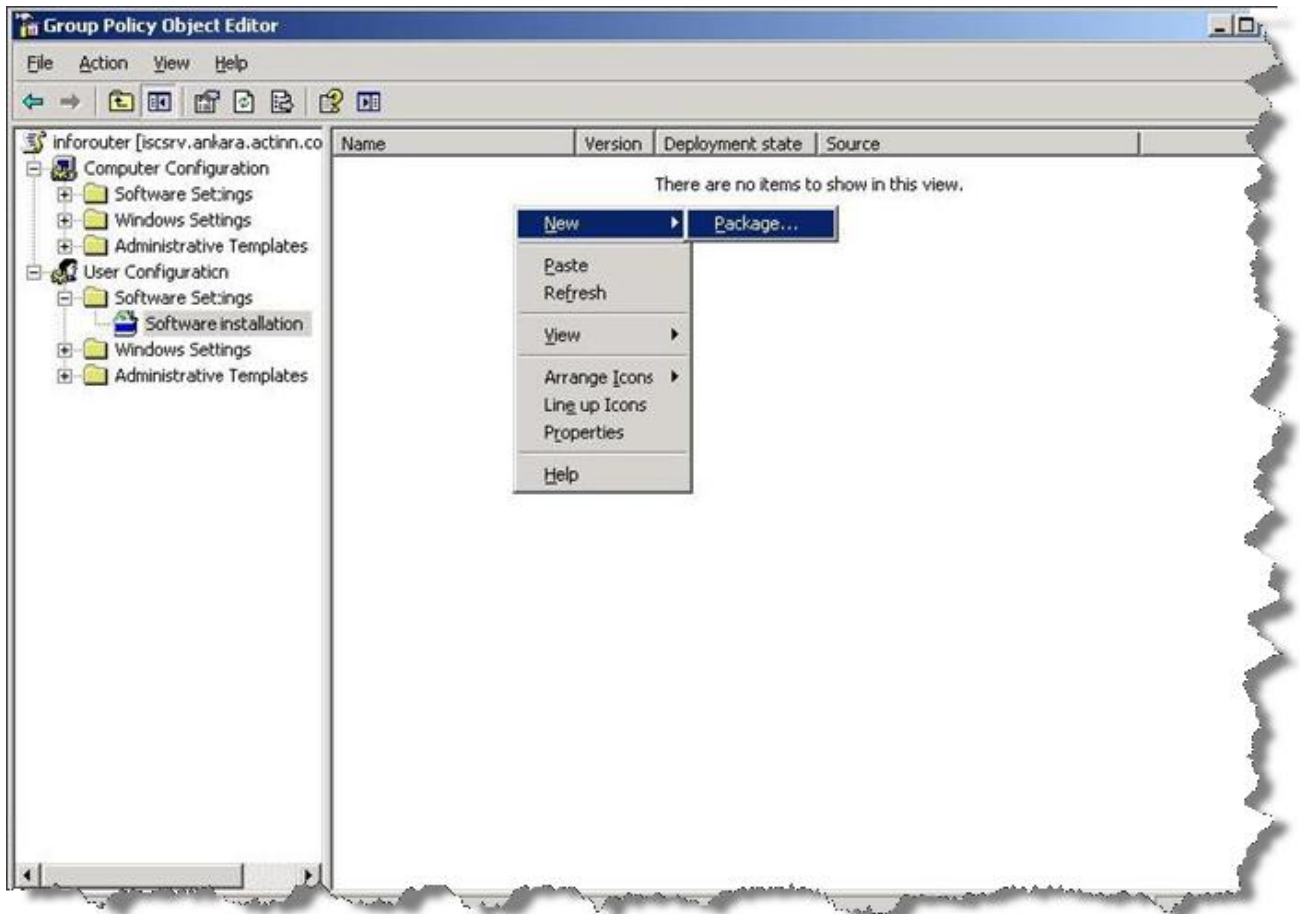
---

Expand the “User Configuration” node.

Expand the “Software Settings” node

Click on the “Software installation” node.

On the right hand panel, right click to select the “New / Package” menu item.

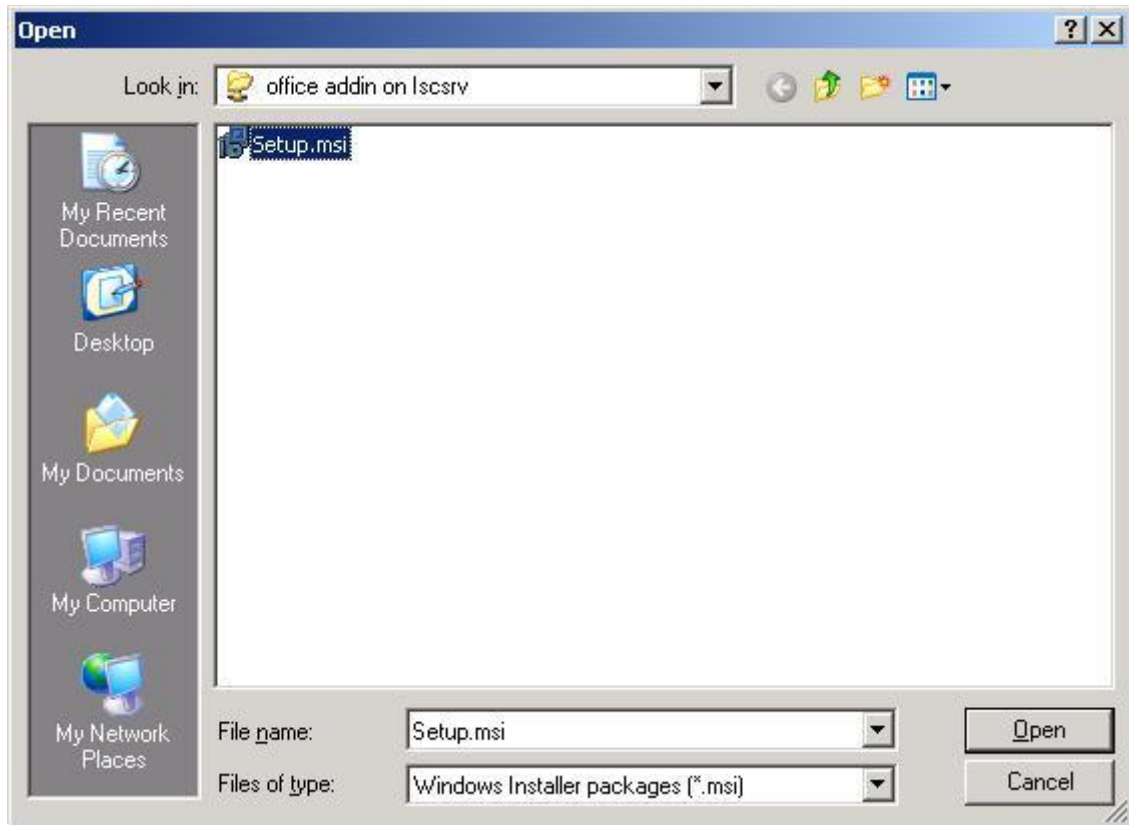


# infoRouter MS Office Add-in Setup

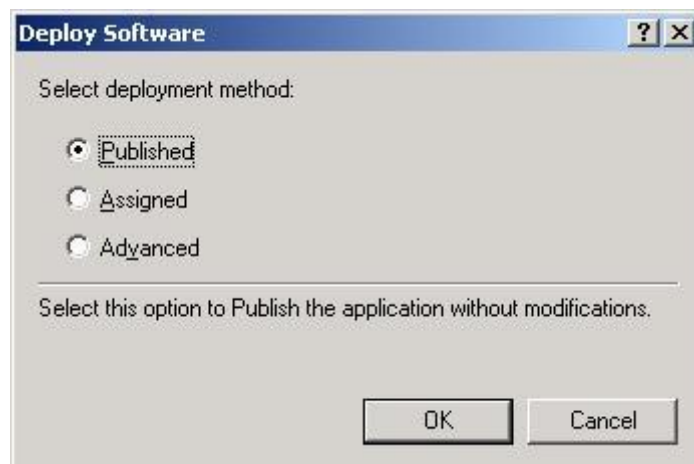
## Installation using Group Policies

---

Select "Setup.msi" file from the **Network Share** you created earlier.



Choose the "Published" option and click on the OK button.

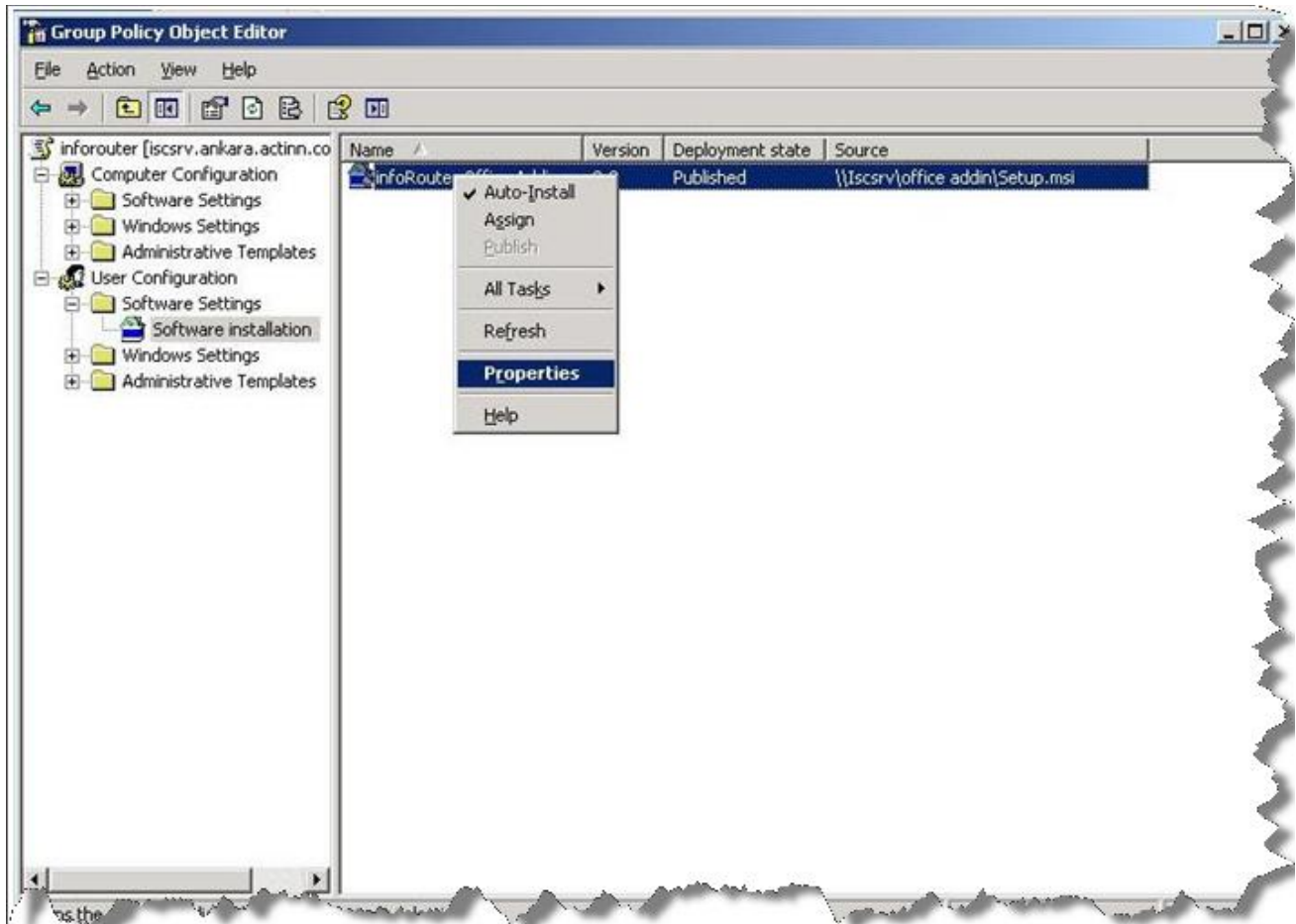


# infoRouter MS Office Add-in Setup

## Installation using Group Policies

---

Right click on “infoRouter office package” and select the “Properties” menu.





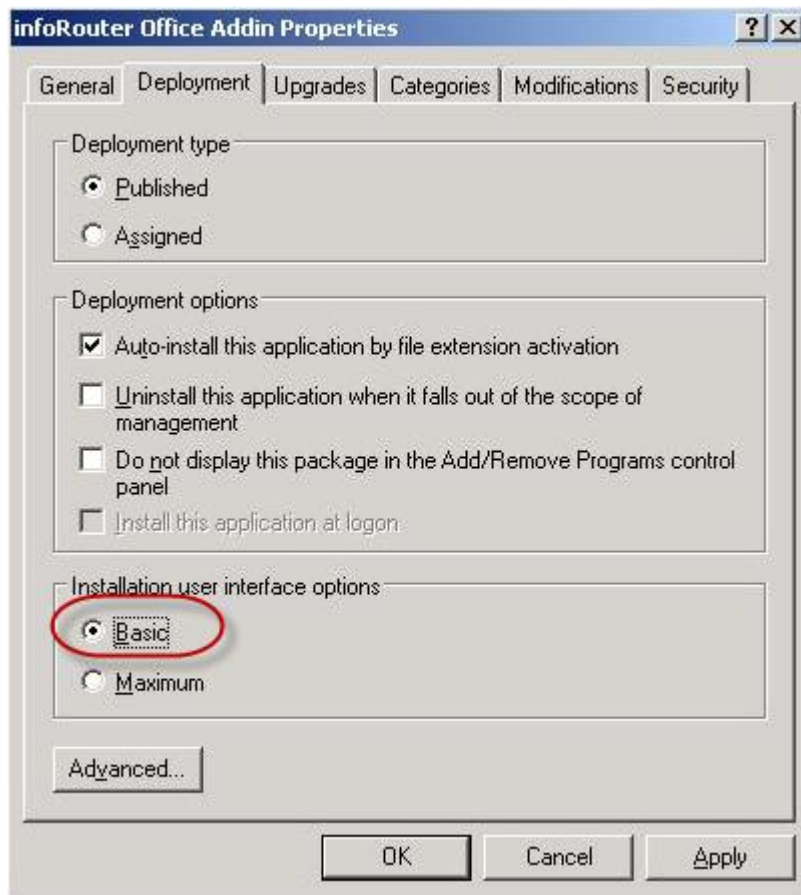
# infoRouter MS Office Add-in Setup

## Installation using Group Policies

---

Switch to the “Deployment” tab.

Select the “Basic” option from “Installation user interface options” section.



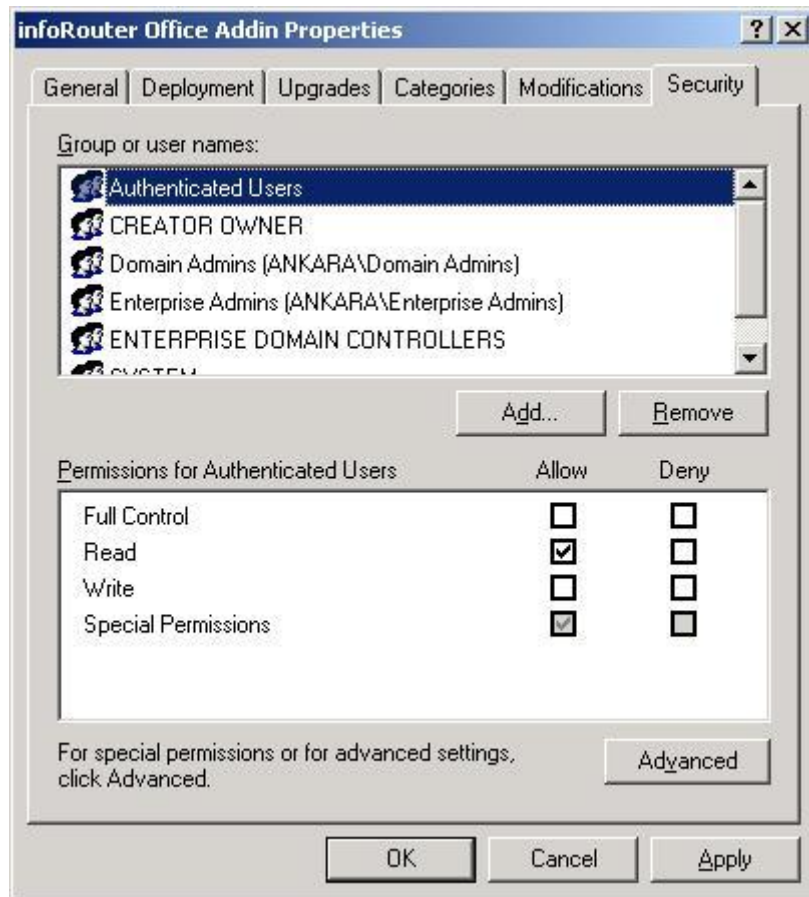
# infoRouter MS Office Add-in Setup

## Installation using Group Policies

---

Switch to the “Security” tab.

Assign “Read” access to the “Authenticated Users” group, and click on the “OK” button.



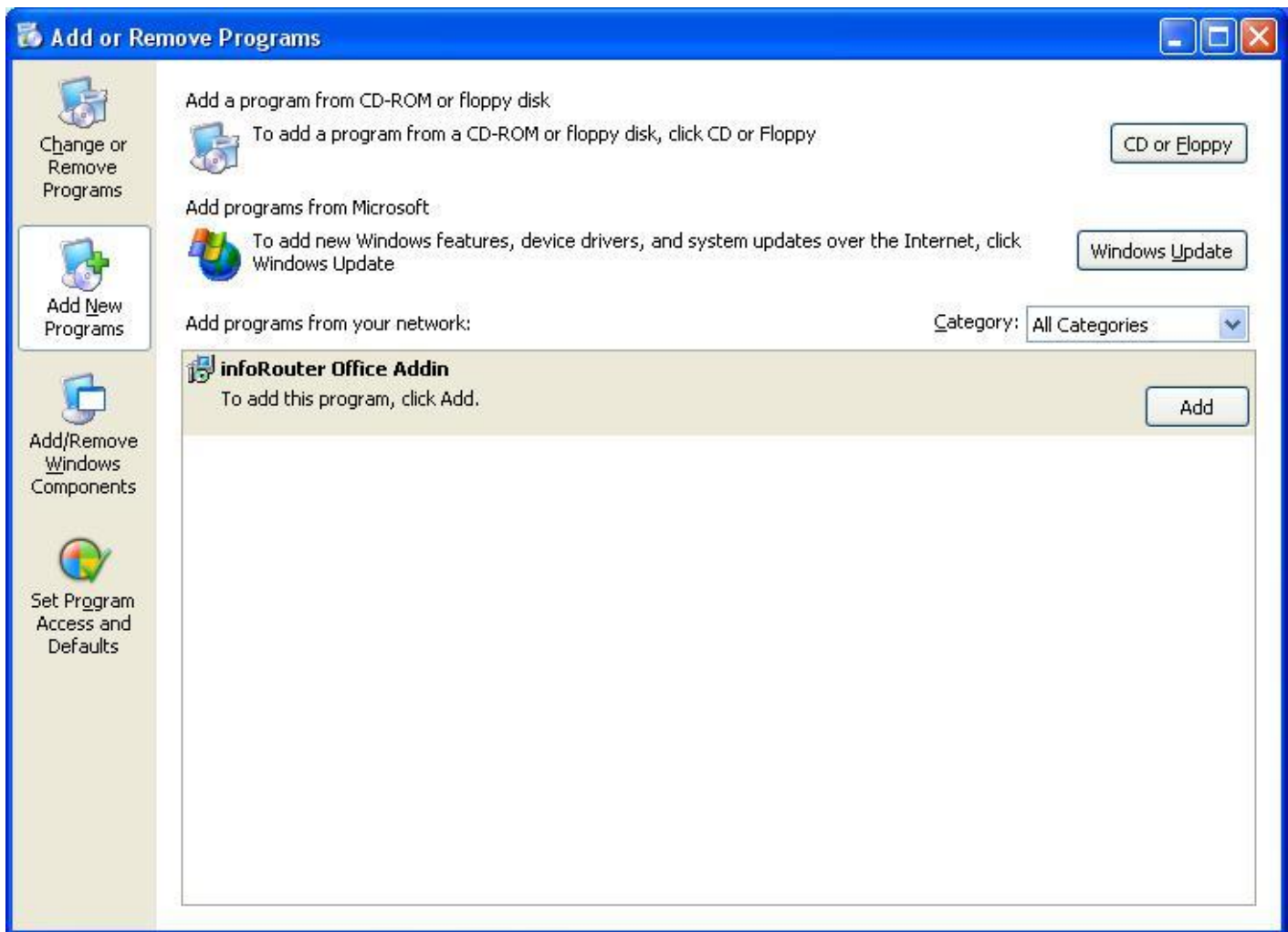
Congratulations! You have successfully created a Group Policy package for infoRouter. Now you authenticated users may install this package to their desktops.

# infoRouter MS Office Add-in Client Setup

## Client Installation using Group Policies

---

- Log in to the client machine using your domain account
- Open "Control Panel" / "Add Remove Programs"
- Click "Add New Programs" on the left side of the dialog box.
- Select the "infoRouter Office Add-in" package from the program list.

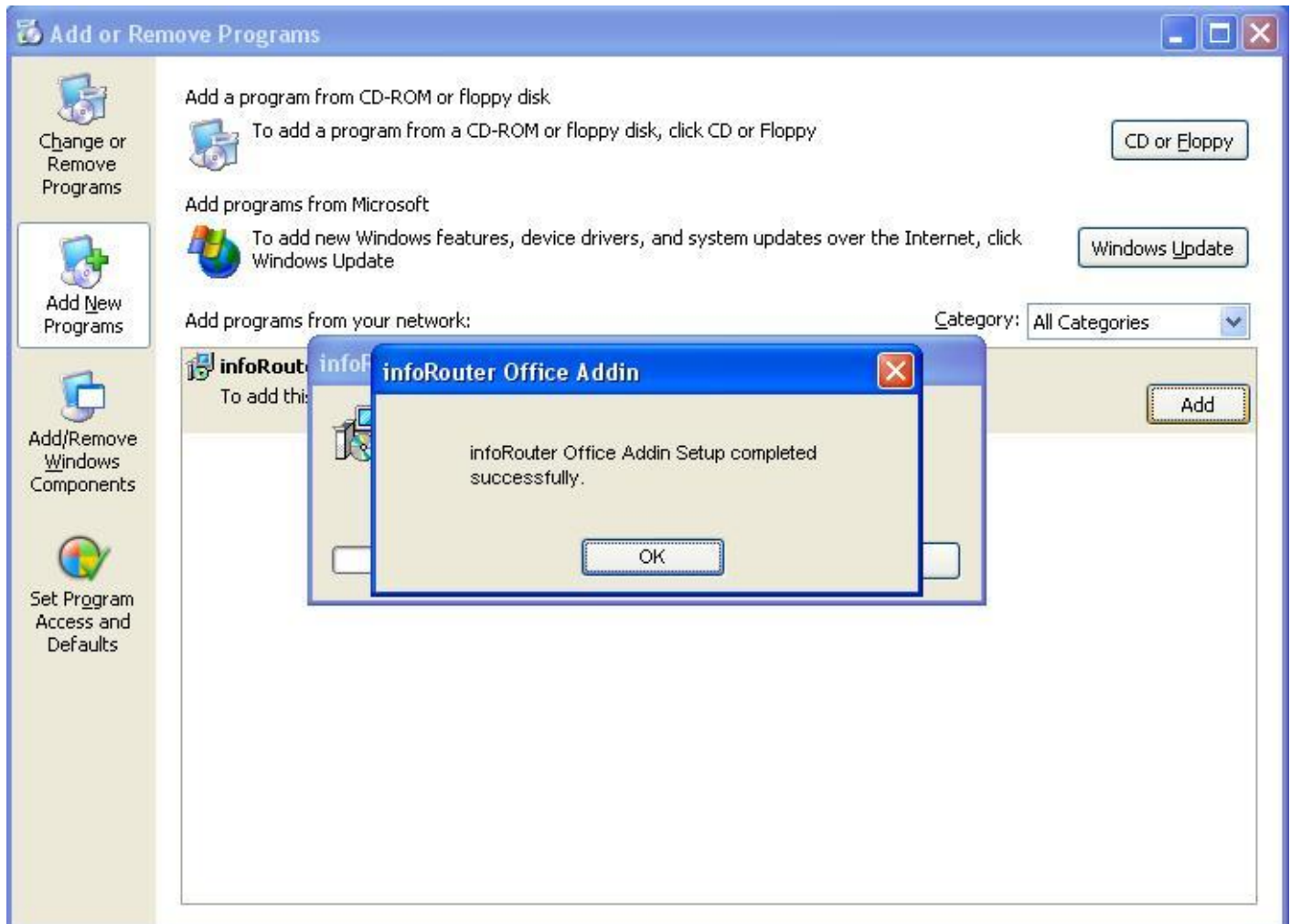


# infoRouter MS Office Add-in Client Setup

## Client Installation using Group Policies

---

The infoRouter installation will be completed. When the install is complete, the following dialog box will be displayed.



Note: Client machines may require a reboot after installing software from remote servers using group policy.