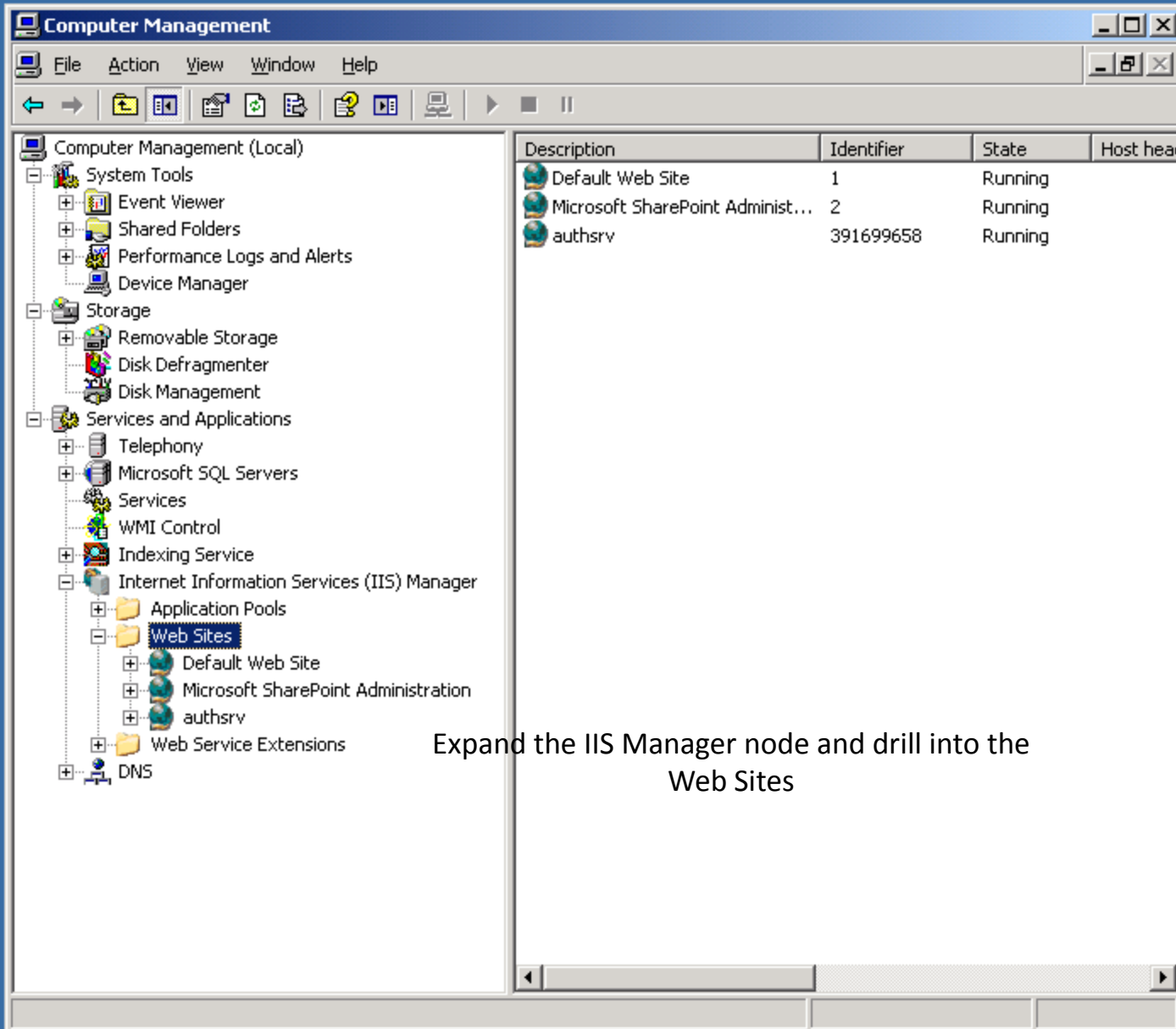


How to create a Web Site for infoRouter Version 7.5

Use this guide to create a web site that runs on its own IP or its own
port number under an existing IP



Navigate to the Computer Management console by right clicking on “My Computer” and selecting “Manage”

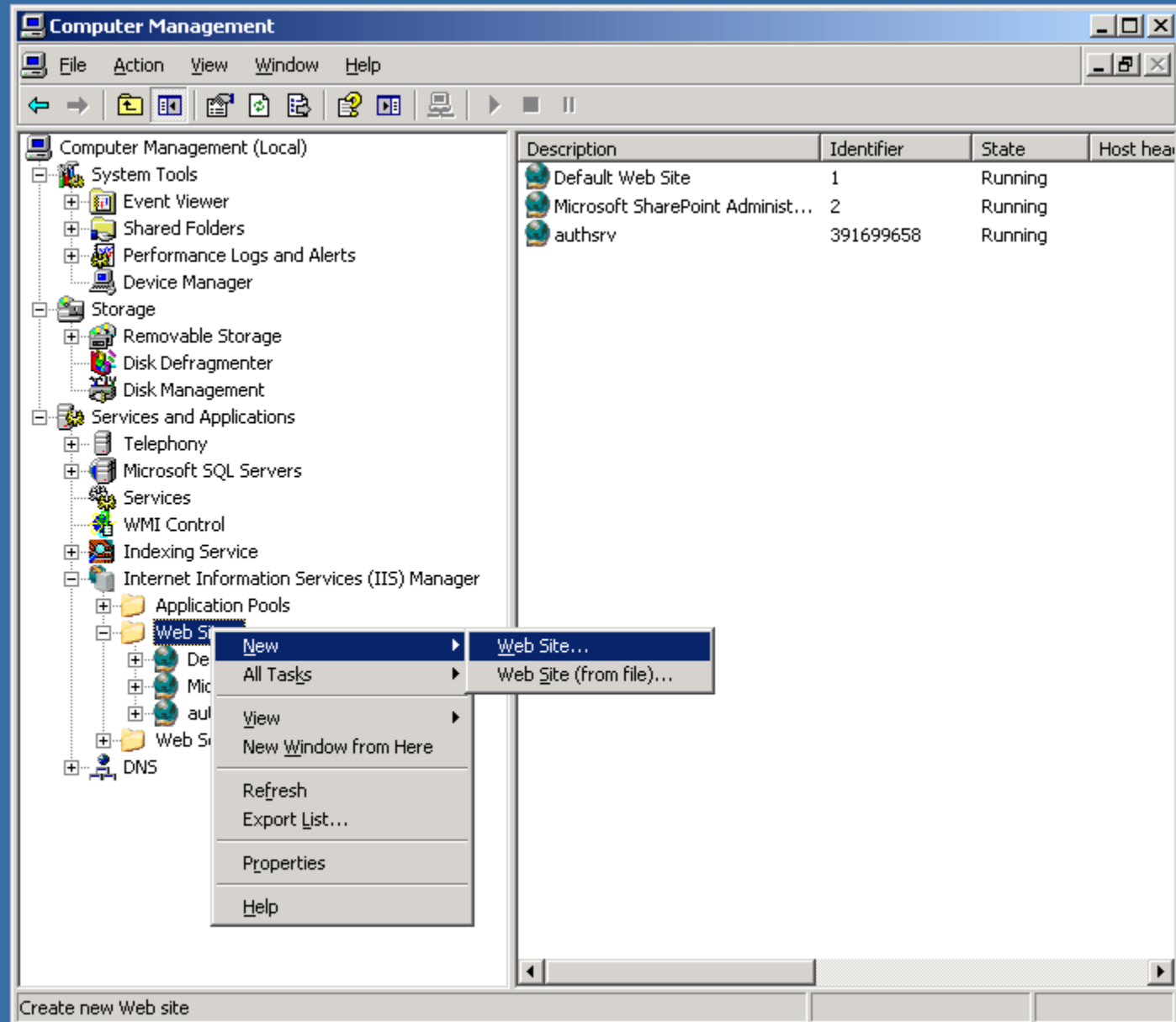


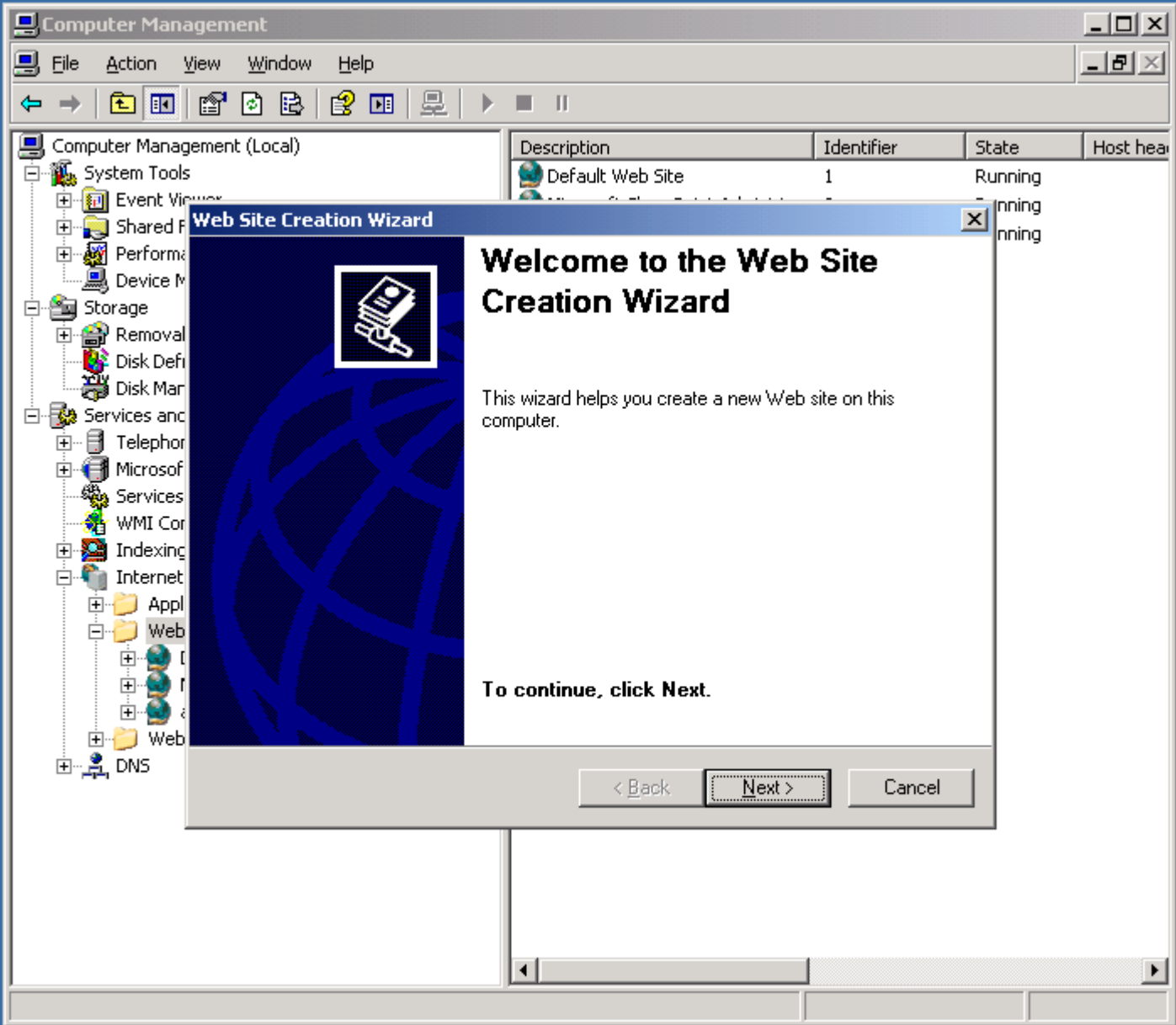
The screenshot shows the Windows Computer Management console. The left pane displays a tree view of system tools, with 'Internet Information Services (IIS) Manager' expanded to show 'Web Sites'. The right pane displays a table of web sites.

Description	Identifier	State	Host head
Default Web Site	1	Running	
Microsoft SharePoint Administr...	2	Running	
authsrv	391699658	Running	

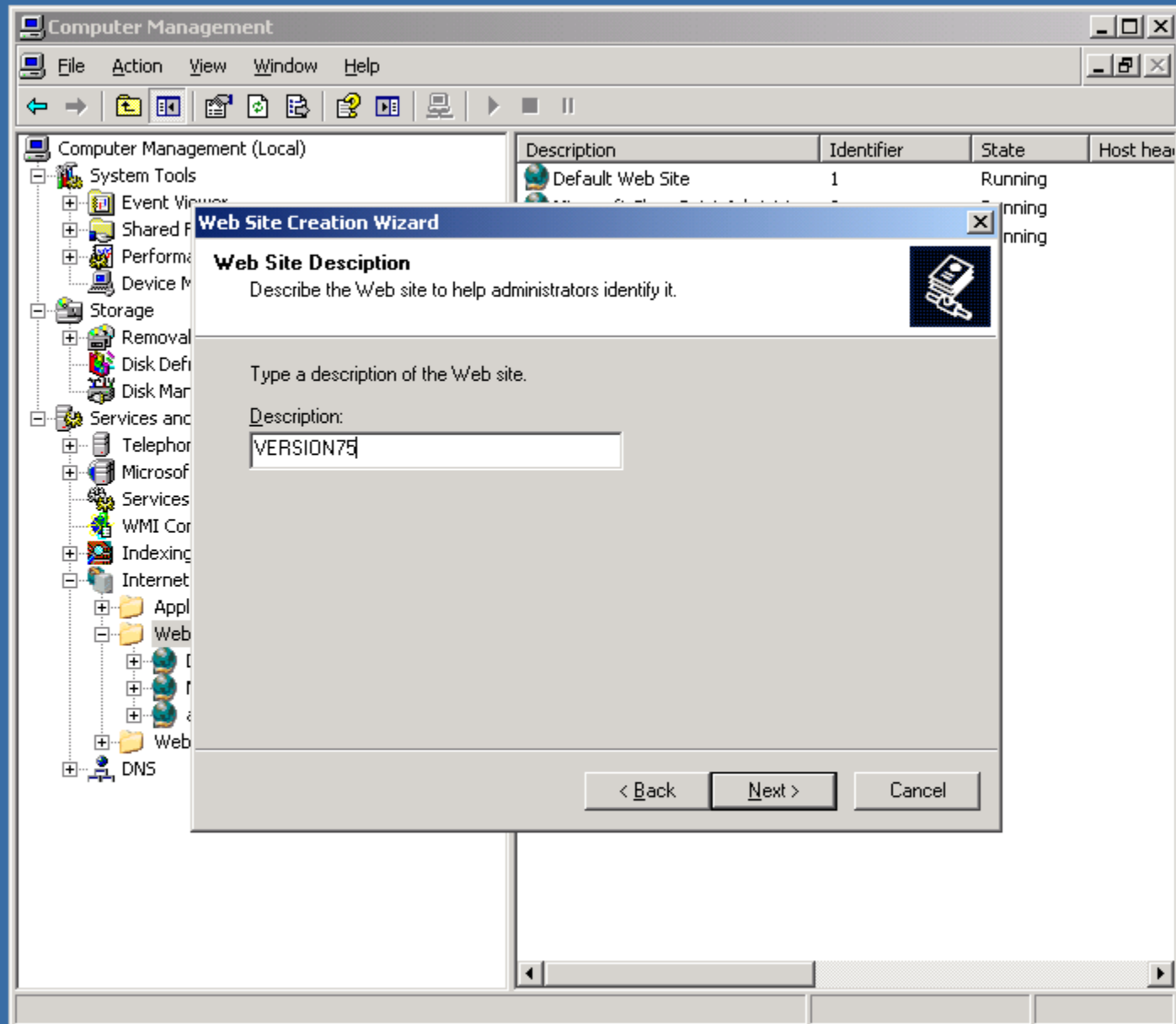
Expand the IIS Manager node and drill into the Web Sites

Right click on Web Sites and choose New>Web Site

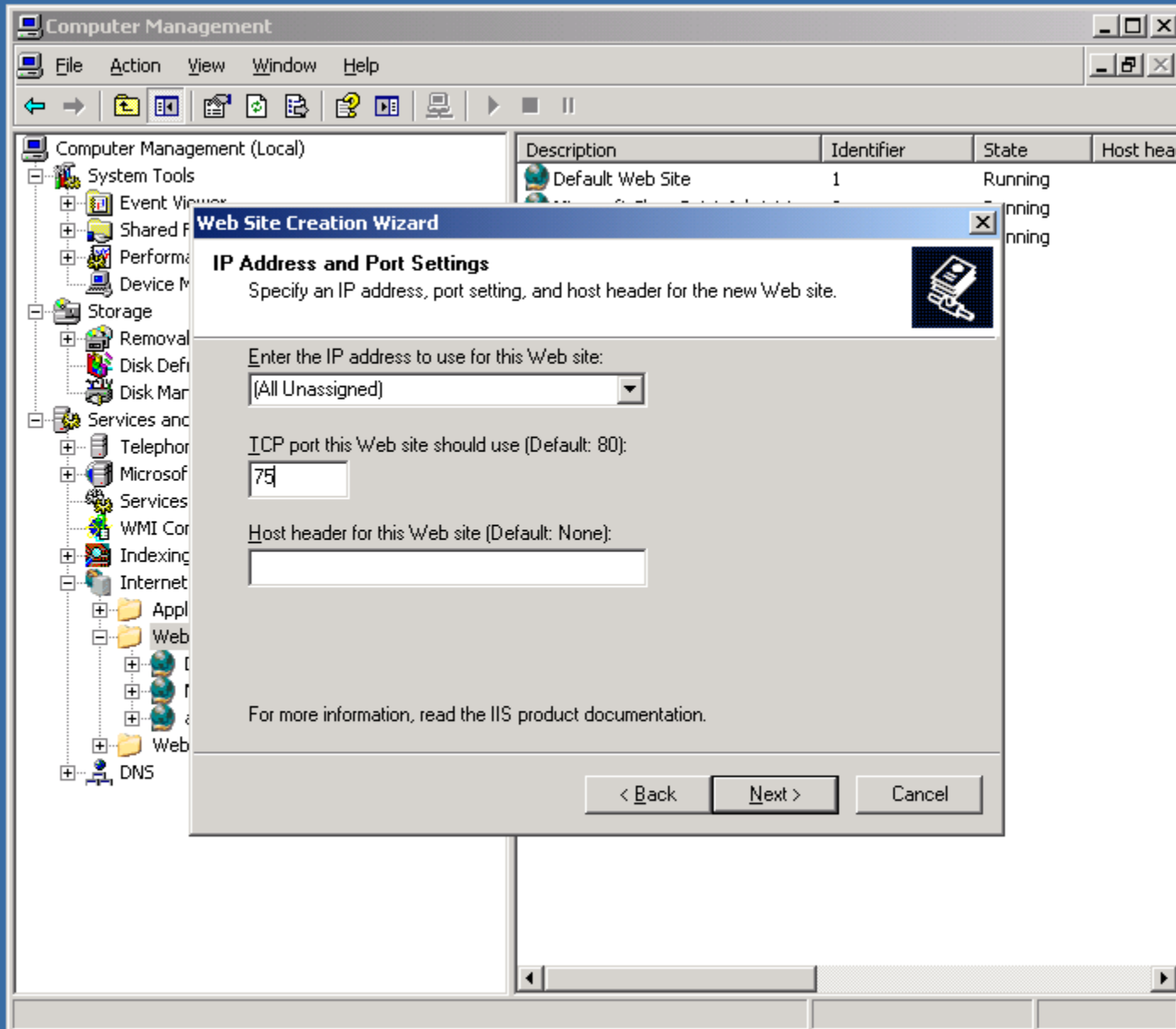




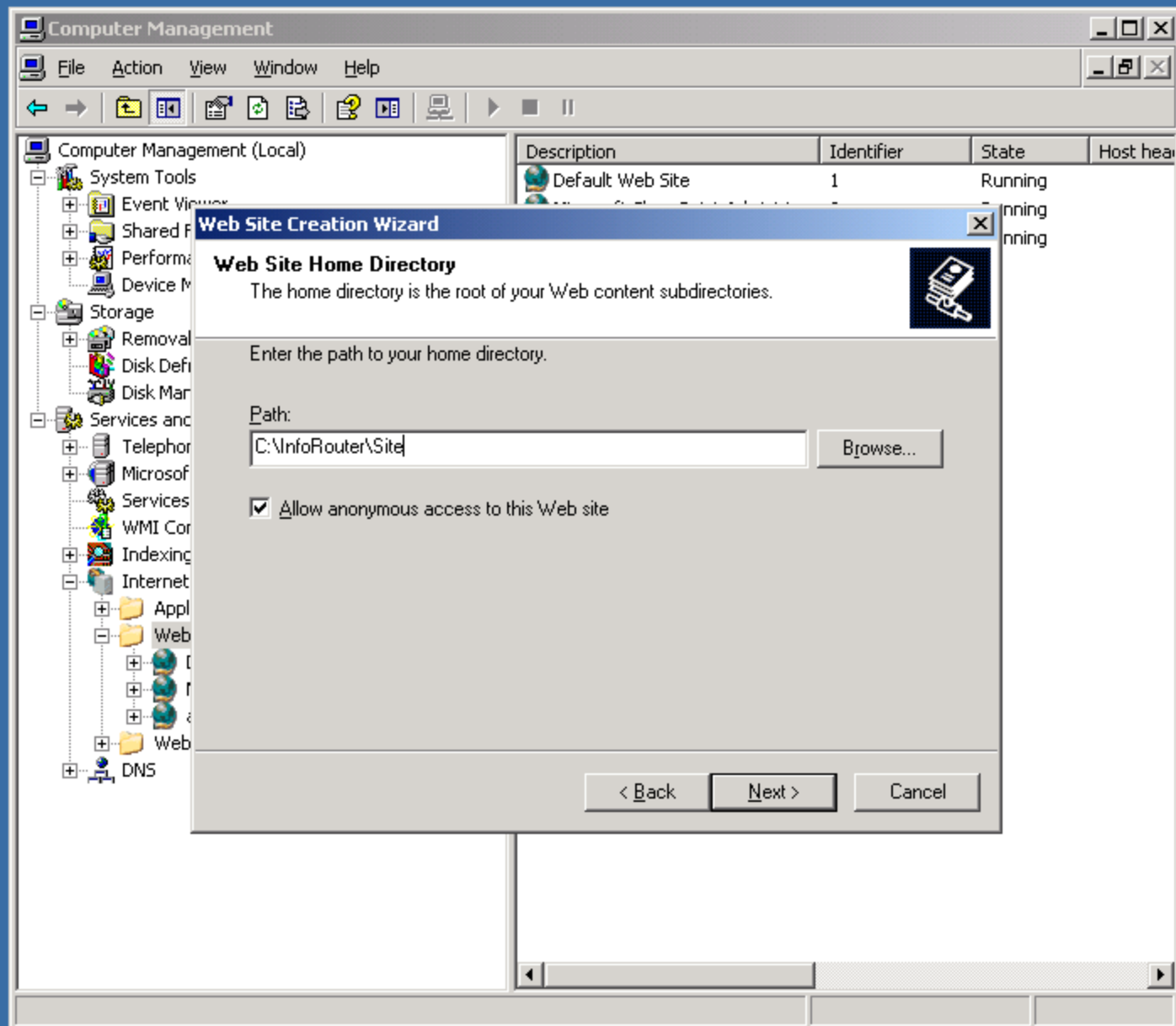
Choose a name for the web site using the wizard. The typical usage is to name it "inforouter"



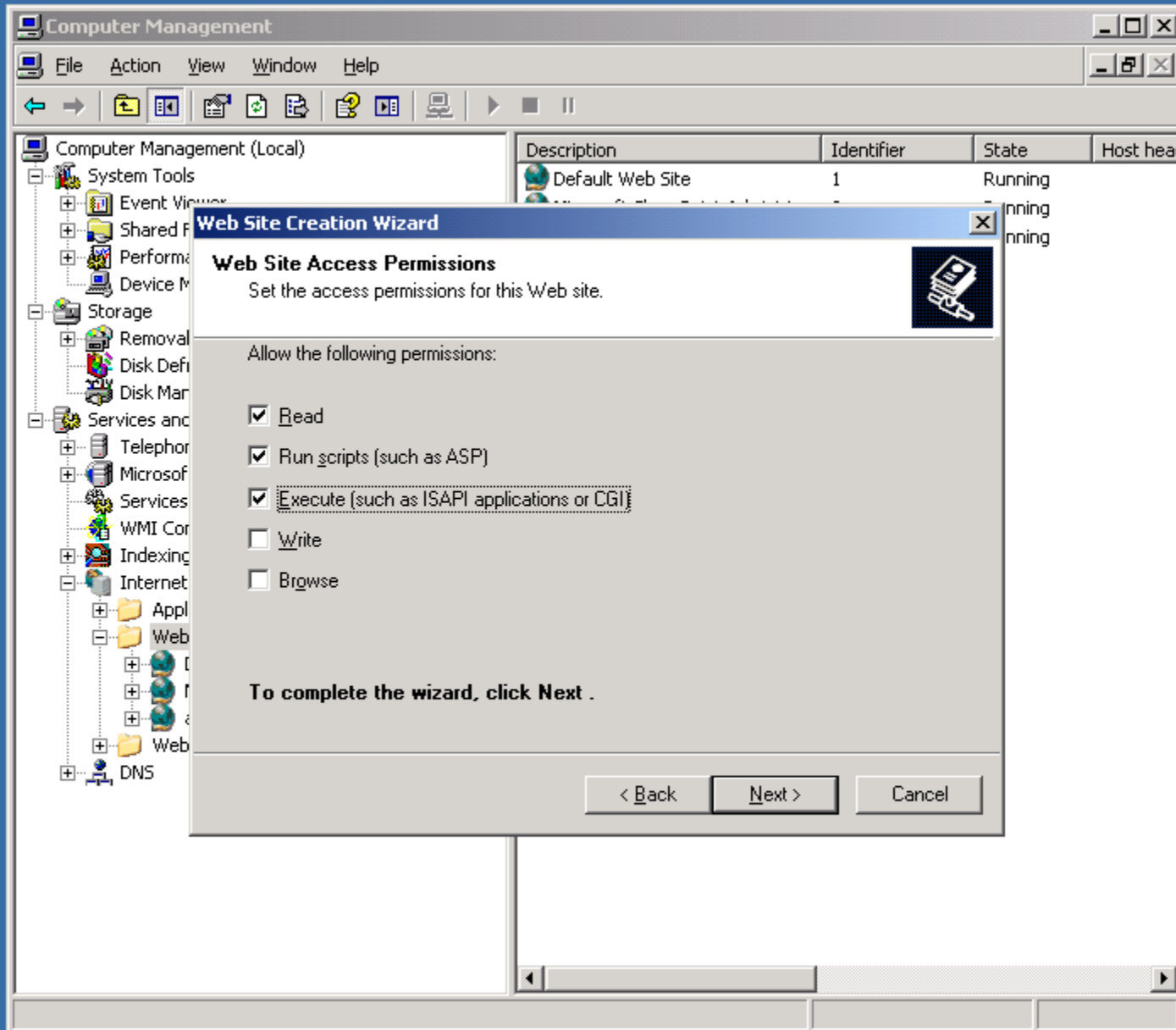
The default port for web sites is 80. You may specify a different port if you have more than one web site running under the same IP.



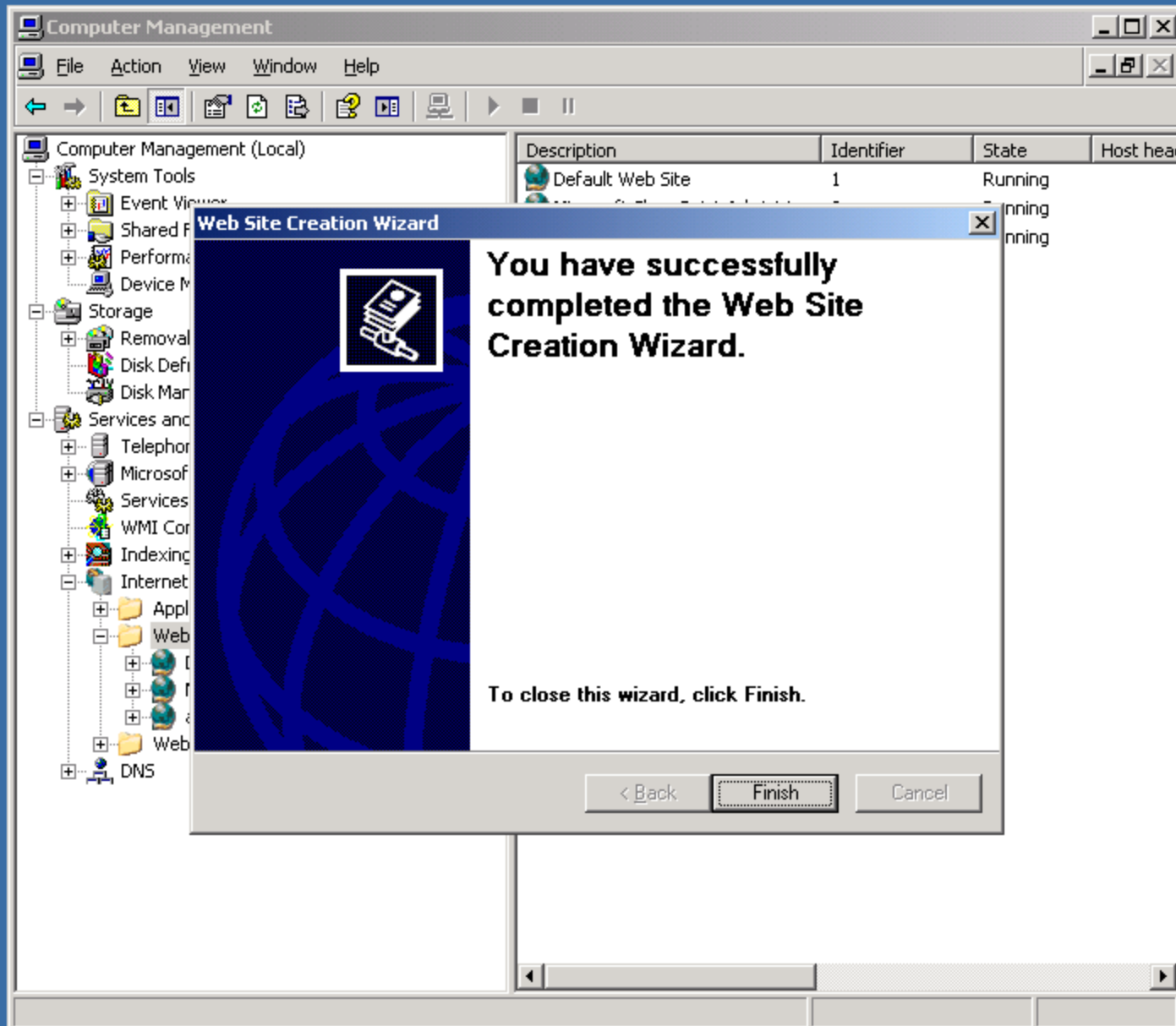
Specify the installation directory. Be sure to point to the site directory as shown.



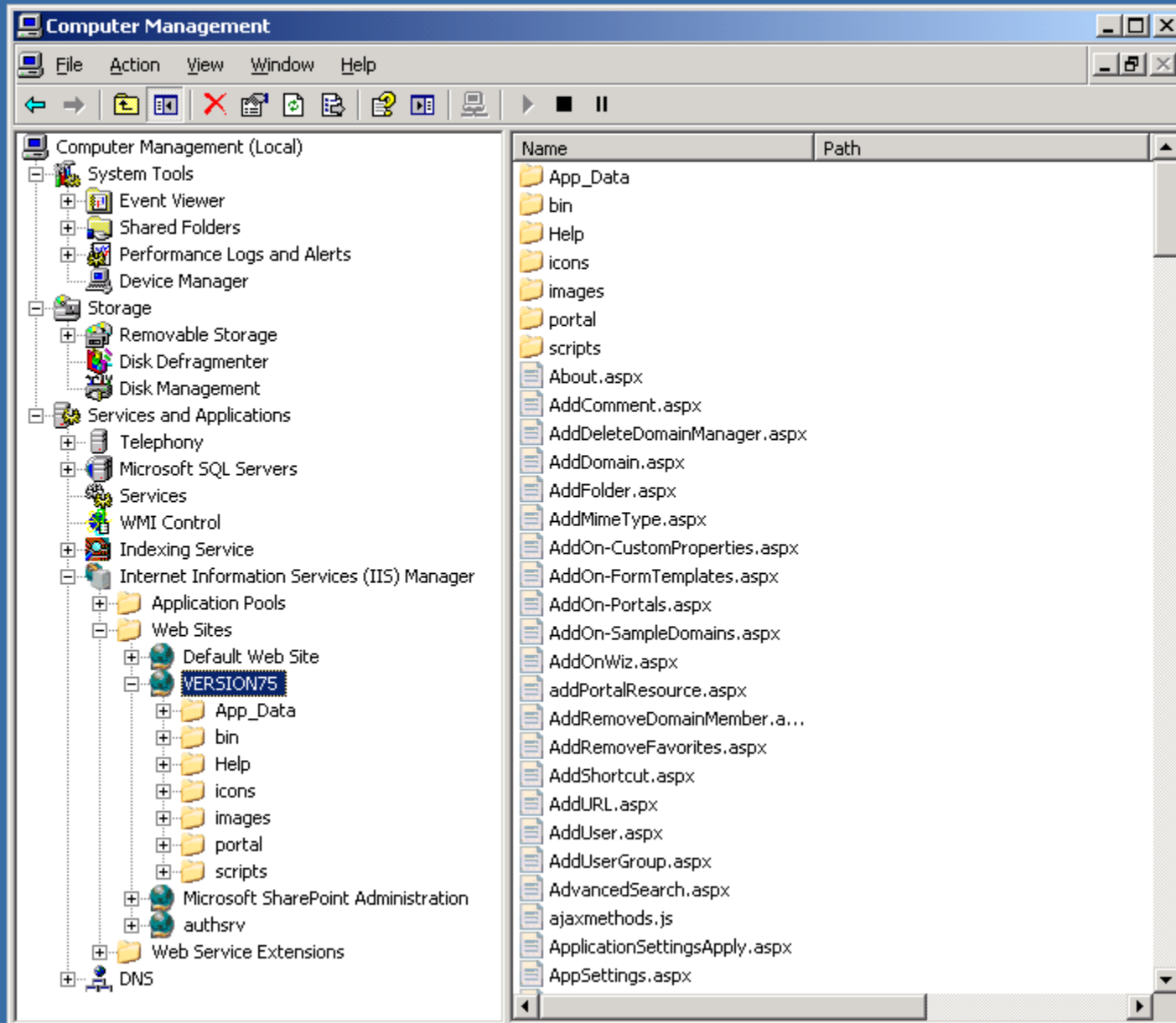
Make sure to check the boxes as show I the image below.

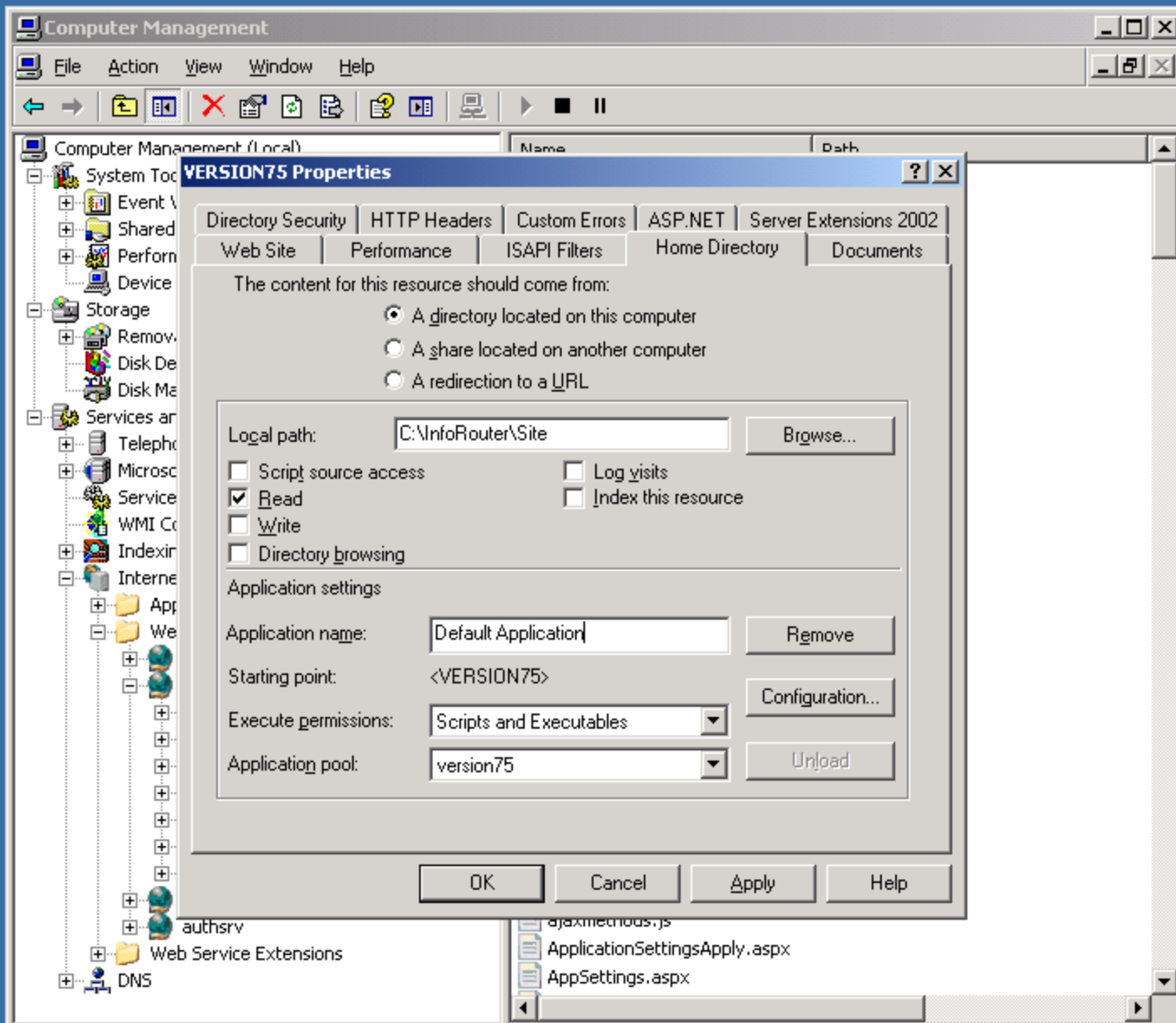


Click finish to complete the wizard.

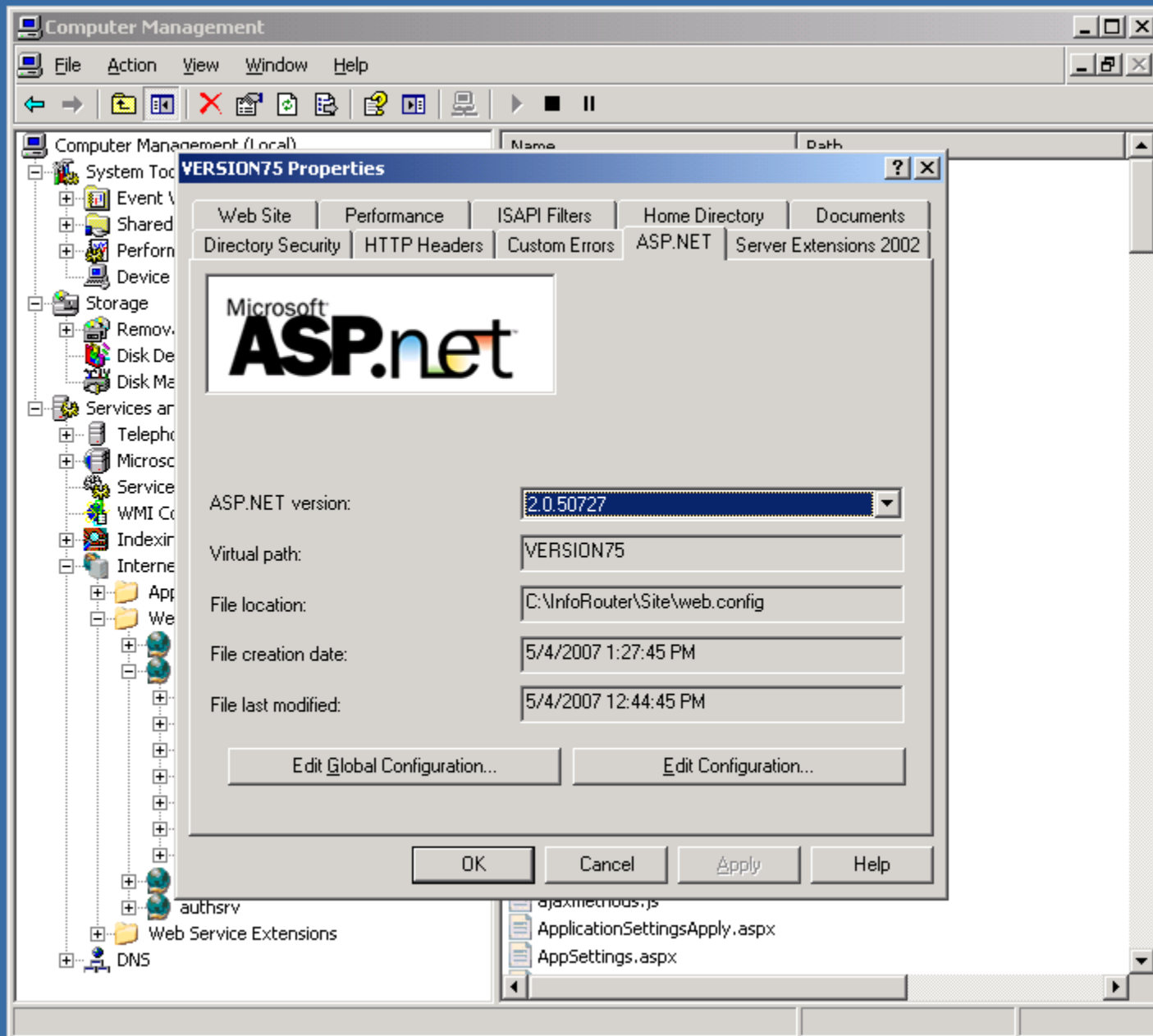


The new web site is now created. Right click on the new web site and choose properties.





Click on "Edit Configuration"



C:\WINDOWS\Microsoft.NET\Framework\v2.0.50727\aspnet_isapi.dll

The screenshot shows the IIS Application Configuration console for a web site. The 'Mappings' tab is selected. A table lists existing application extensions with their file extensions and executable paths. Below the table are buttons for 'Add...', 'Edit...', and 'Remove'. An 'Insert...' button is highlighted with a red arrow. A callout box points to this button with the text 'Click on "Insert" to add a new mapping.' Below the main console, the 'Add/Edit Application Extension Mapping' dialog box is open, showing the 'Executable:' field with the path 'et\framework\v2.0.50727\aspnet_isapi.dll' and a 'Browse...' button. There is also a checkbox for 'Verify that file exists' and 'OK', 'Cancel', and 'Help' buttons.

Exten...	Executable Path	Ve
.ad	c:\windows\microsoft.net\framework\v2.0.50...	GE
.adpro...	c:\windows\microsoft.net\framework\v2.0.50...	GE
.asa	C:\WINDOWS\system32\inetsrv\asp.dll	GE
.asax	c:\windows\microsoft.net\framework\v2.0.50...	GE
.ascx	c:\windows\microsoft.net\framework\v2.0.50...	GE

Application Configuration

Cache ISAPI extensions

Application extensions

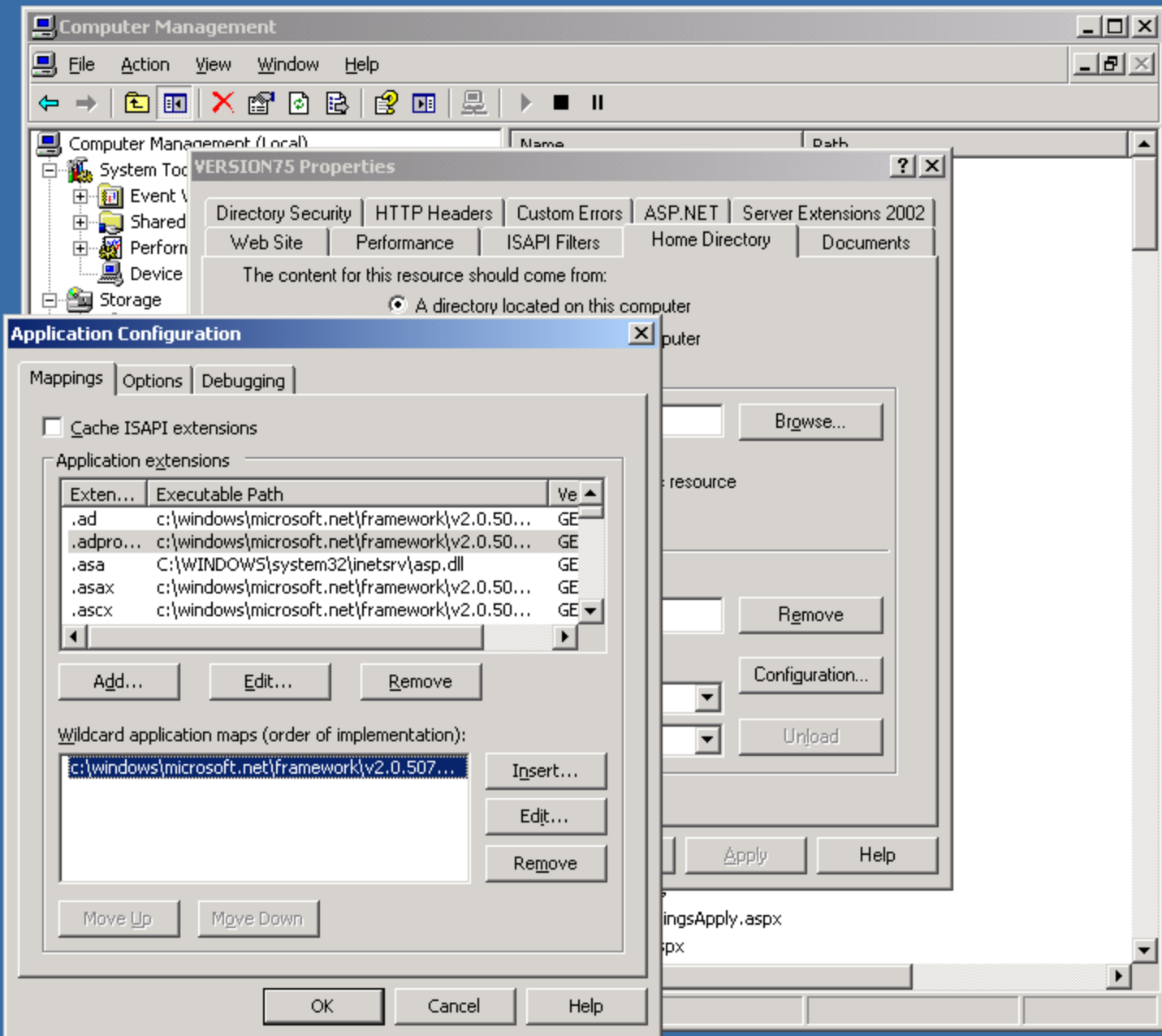
Wildcard application maps (order of implementation):

Insert...

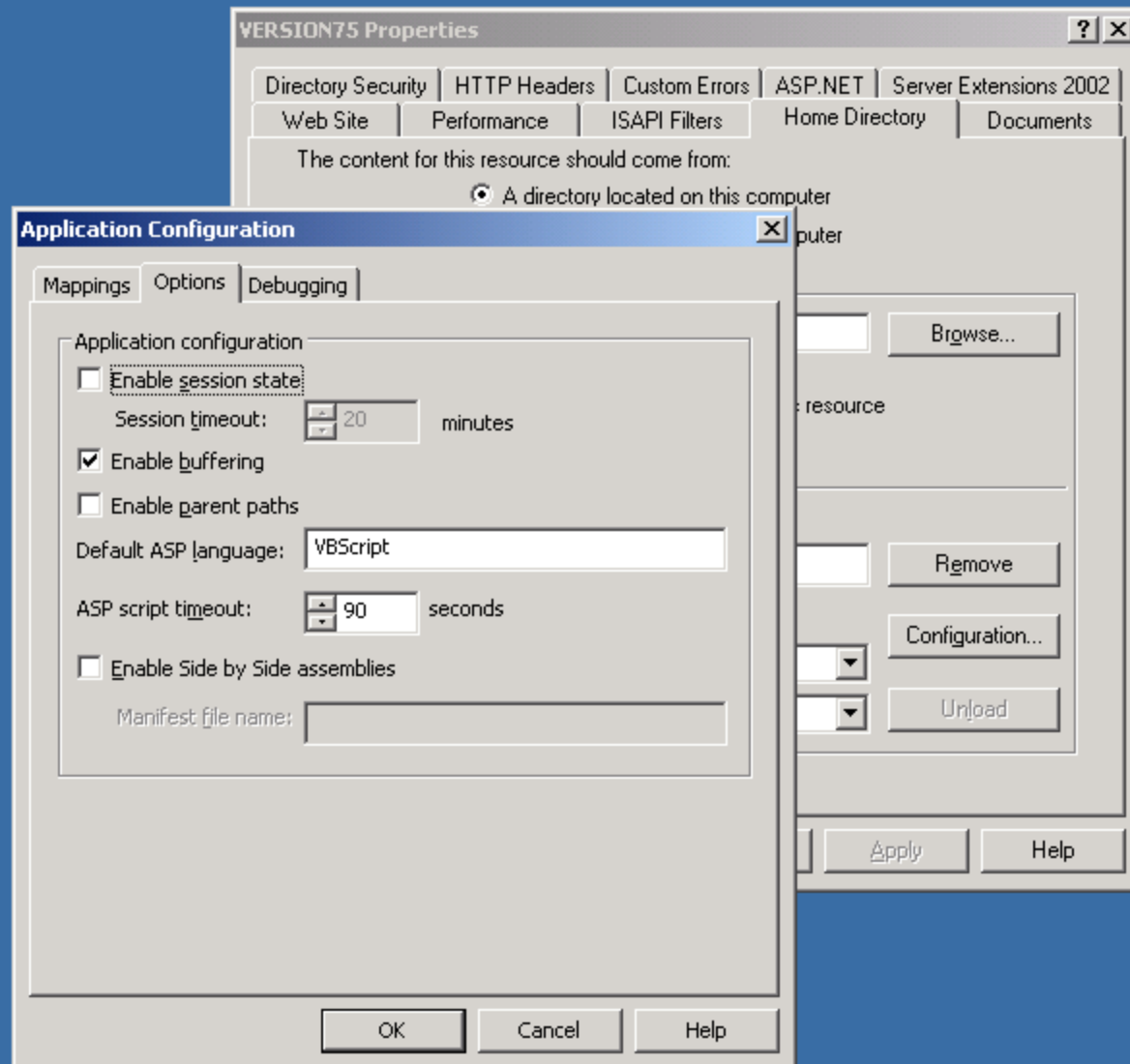
Add/Edit Application Extension Mapping

Executable: et\framework\v2.0.50727\aspnet_isapi.dll

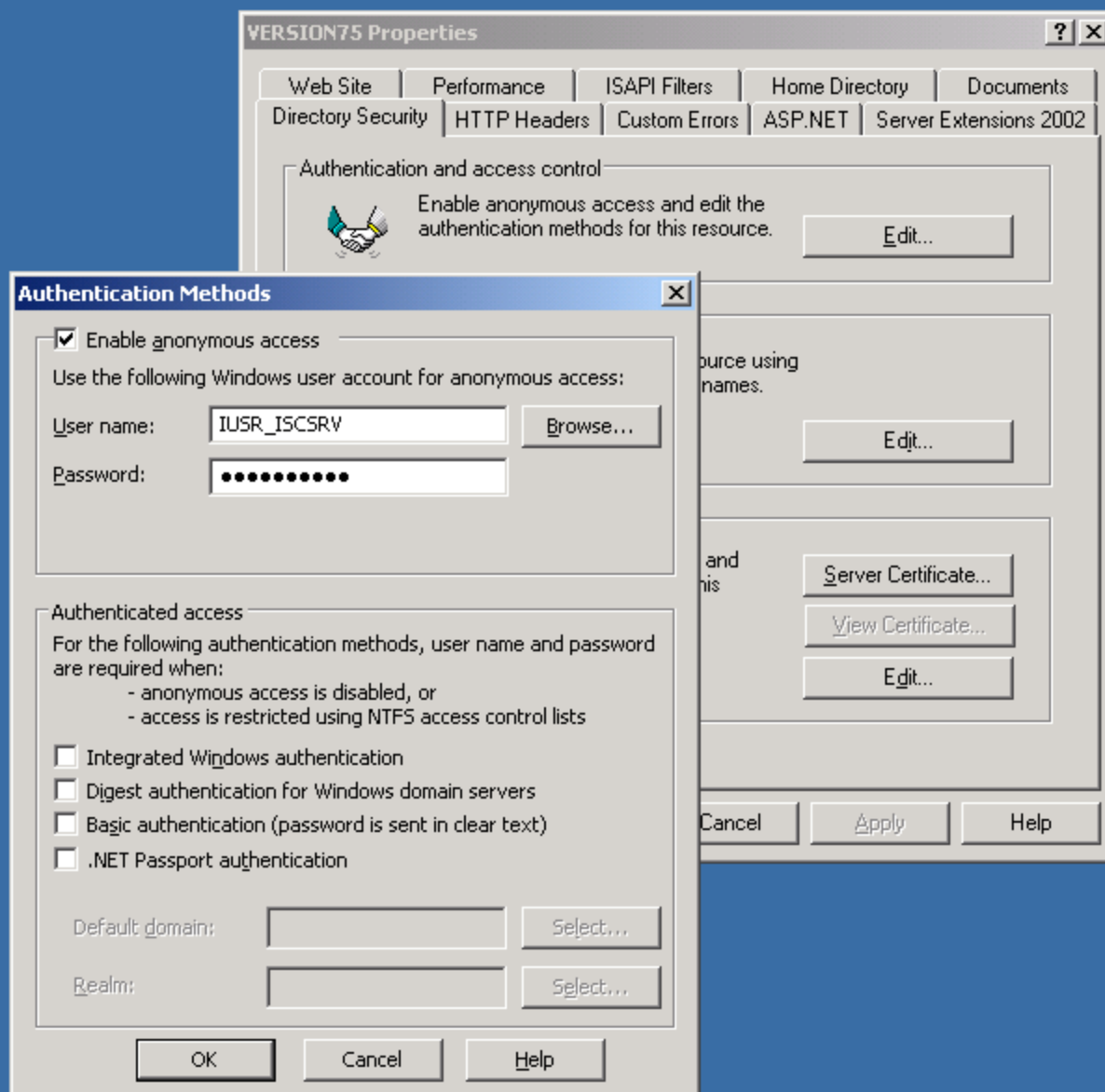
Verify that file exists



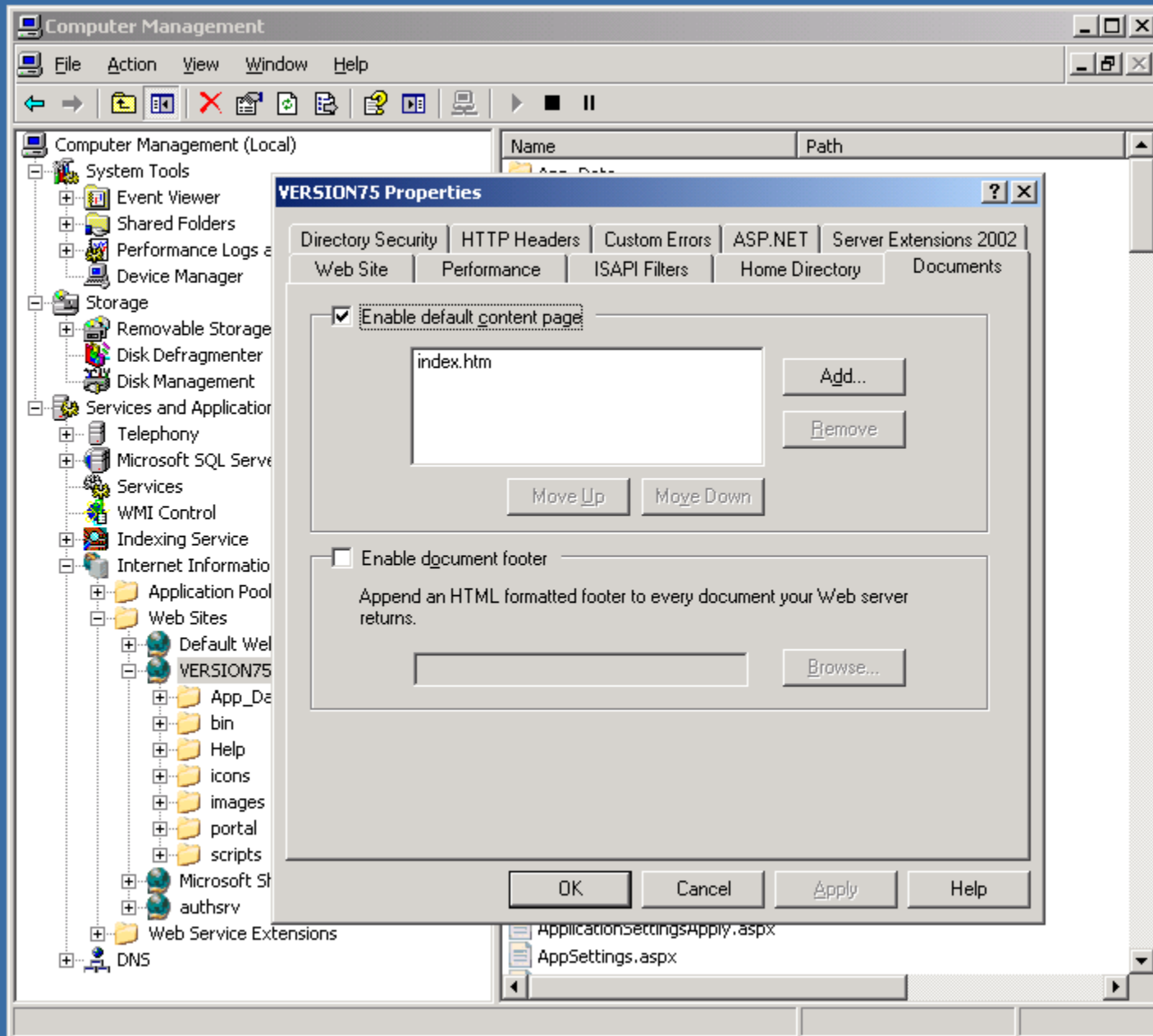
Switch to the “Options” tab and make the required changes as shown below.



Switch to the “Directory Security” tab and enable “Anonymous Access”. Make sure to uncheck all the other options.



Switch to the Documents tab and enable default content page as show below



Launch a browser and navigate to infoRouter.

Your Portal Title goes here - Windows Internet Explorer

http://laptop/InfoRouter/portals/default/

Your Portal Title goes here

Your Portal Title goes here
Your Portal Description goes here

Search: Search

Home Document Library Categories Search Help Member Login

Welcome to the infoRouter default portal.

Using this portal, you may navigate to different functional areas of infoRouter.

To view and create documents and folders, navigate to the "Document Library". To search for documents, navigate to the "Search" tab.


For Administrative functions, navigate to the "Control Panel". Remember, access to all areas are subject to security.


Or simply sit back and watch videos and presentations to learn how to use infoRouter.

Take a Tour

Take a Tour!..

Click on the link below to navigate to the infoRouter Web Site. You will be able to watch various Video Demonstrations of the major features of infoRouter.



 **Product Tour**

Search in InfoRouter

Please type your search text here. The search engine will return all documents containing the search text. However, the documents to which you have no access will be filtered out of the search results.

Search

Local intranet 100%